



## WOODMONT ESTATE

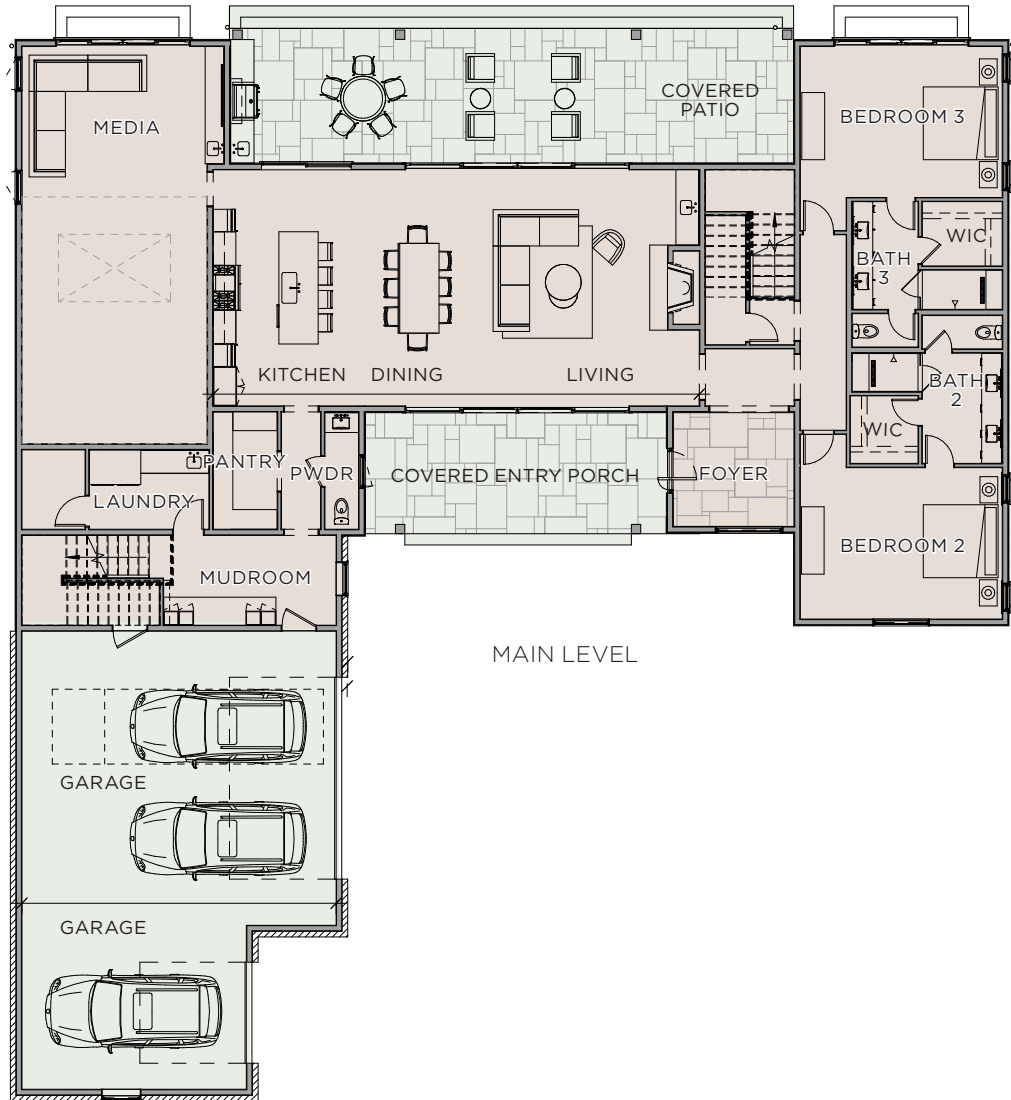
### TROUBADOUR

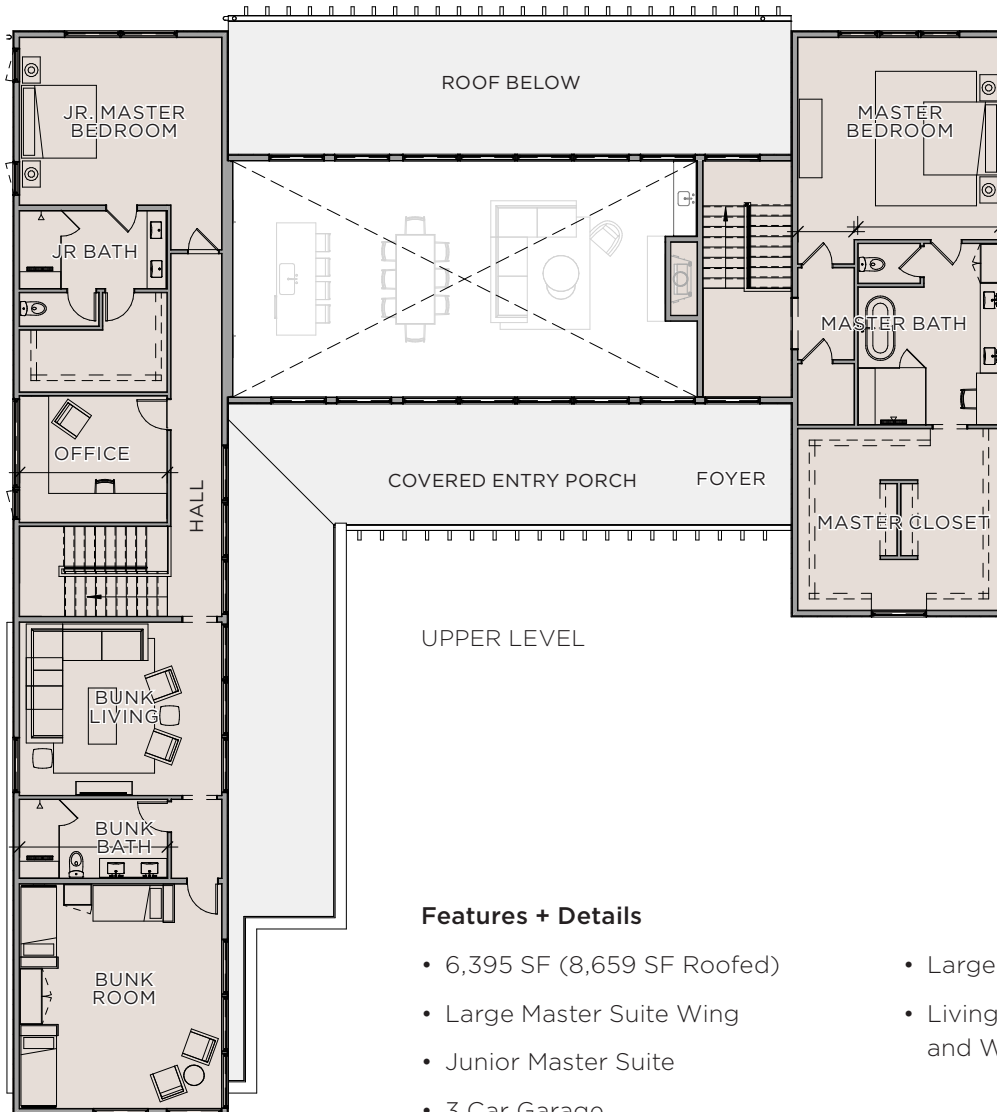
Illuminated in every corner by natural light and living spaces designed to accommodate every walk of life, the Woodmont Estate is an inviting and open floorplan that suits your lifestyle effortlessly. The chef's kitchen will be the backdrop to home-cooked meals served in the elegant dining room. The living room is ripe for lounging and entertaining, while a large media room allows for the fun to continue. The Primary Suite wing includes a spa-like bathroom and walk-in closet. The Woodmont Estate is ideal for enjoying life's pleasures with the ones you love most.



# FLOOR PLANS

**Total SQ Footage:** 6,395 SF    **Bedrooms:** 5  
**Main Level:** 3,460 SF    **Bathrooms:** 5.5  
**Upper Level:** 2,935 SF





**Features + Details**

- 6,395 SF (8,659 SF Roofed)
- Large Master Suite Wing
- Junior Master Suite
- 3 Car Garage
- Large Covered Porch
- Living Room with Fireplace and Wet Bar



## CONTACT

T +1.615.436.6851

E [sales@thetroubadourclub.com](mailto:sales@thetroubadourclub.com)

## TROUBADOUR GOLF AND FIELD CLUB

8000 Club View Dr

College Grove, TN 37046



These materials and the features and amenities described and depicted herein are based upon current development plans, which are subject to change without notice. Obtain the property report required by applicable government authorities before signing anything. No governmental agency has judged the merits or value, if any, of this property. This material shall not constitute an offer to sell in any state where prior registration is required.

Discovery Tennessee Realty, LLC  
T: 1.480.624.5200

