



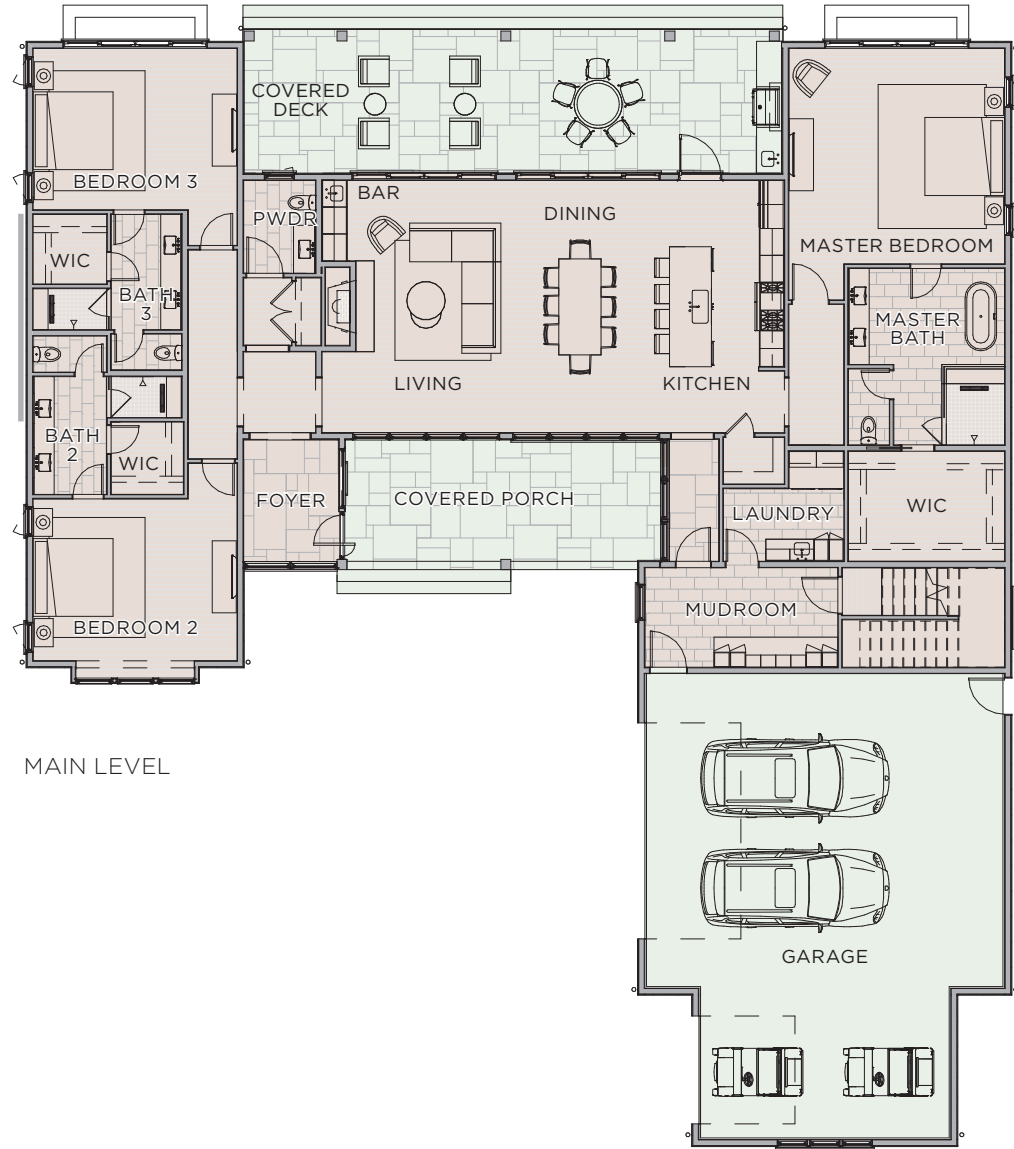
TROUBADOUR

WOODMONT

The Woodmont features 4,083-square-feet of living space with an inviting open floor plan. A glass gallery leads into the 15ft tall great room living-dining-kitchen area with a private primary suite on one side and two large bedroom suites on the other. A large covered patio accessed from the main living area makes outdoor entertaining ideal. Additionally, there is a large in-law suite above the 3 car garage.



Total SQ Footage: 4,083 SF **Bedrooms:** 4
Main Level: 3,216 SF **Bathrooms:** 4.5
Upper Level: 867 SF

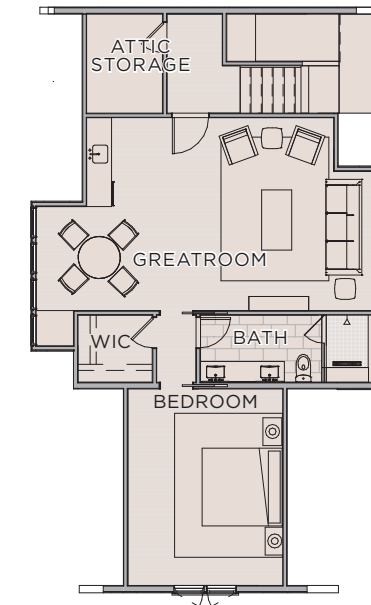


MAIN LEVEL

Features + Details

- 4,083 SF (6,183 SF Roofed)
- 3 Car Garage
- Large Covered Patio
- 9ft Tall Glass Doors
- 10ft Tall Ceilings
- 15ft Tall Great Room
- Wood Shake Roofing

UPPER LEVEL





CONTACT

T +1.615.436.6851

E sales@thetroubadourclub.com

TROUBADOUR GOLF AND FIELD CLUB

8000 Club View Dr

College Grove, TN 37046



These materials and the features and amenities described and depicted herein are based upon current development plans, which are subject to change without notice. Obtain the property report required by applicable government authorities before signing anything. No governmental agency has judged the merits or value, if any, of this property. This material shall not constitute an offer to sell in any state where prior registration is required.

Discovery Tennessee Realty, LLC
T: 1.480.624.5200

