

WOODMONT

Expansive covered patios in front and back make the 4,000 square-foot Woodmont perfect for Troubadour's indoor-outdoor lifestyle. The main level of the residence features a separate master suite along with two additional spacious bedrooms along their own hallway. The inclusion of a 900-square-foot in-law suite on the upper level adds to the home's versatility for frequent guests.



TROUBADOUR

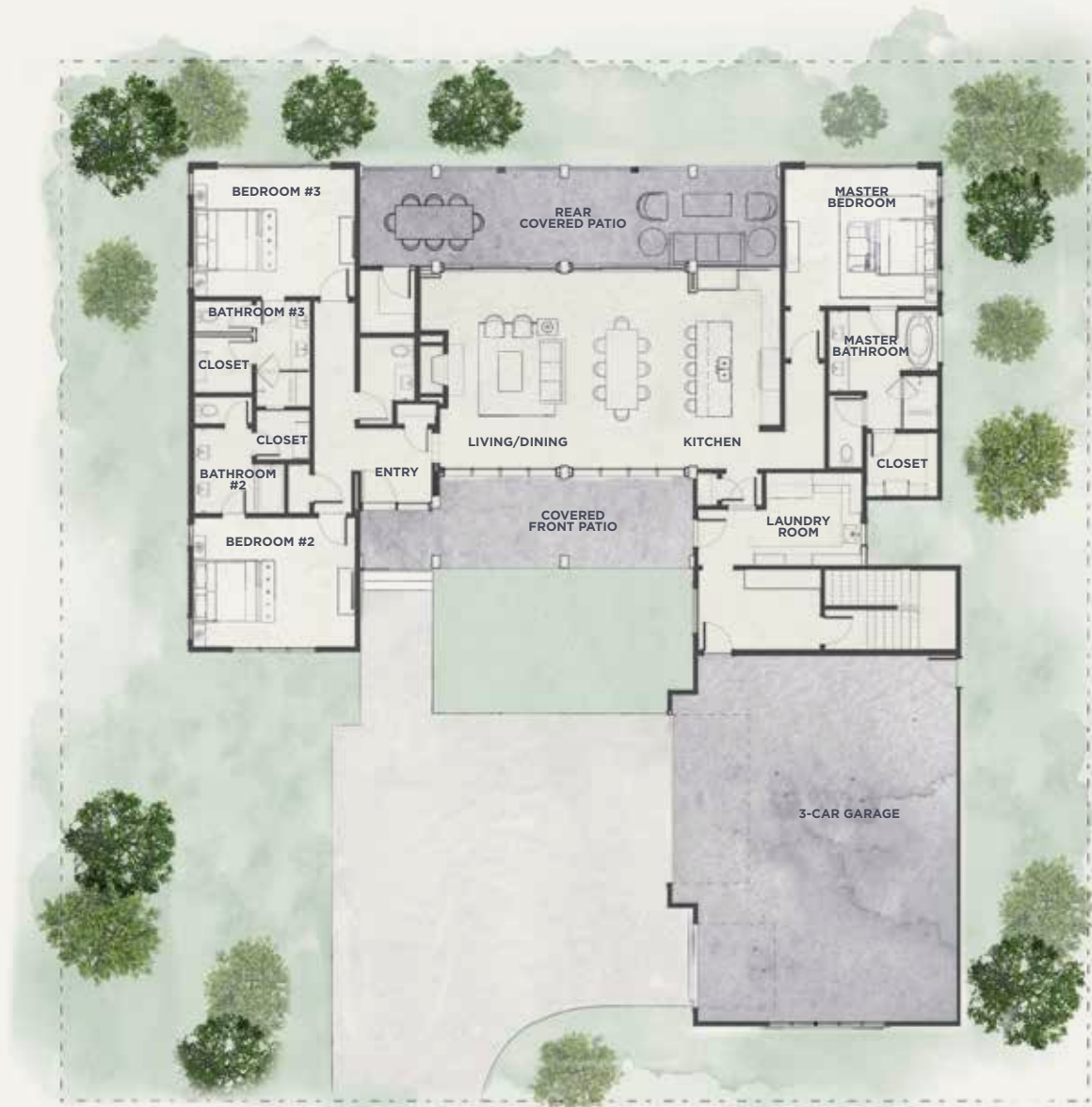


FLOOR PLANS

Total SQ Footage: 4,026 SF
Bedrooms: 4
Main Level: 3,033 SF
Bathrooms: 4.5
In-Law: 993 SF

WOODMONT

Standard with all bedrooms are a large walk-in closet and a bath with a walk-in shower and double vanity. The mud room off the three-car garage offers access to the laundry room as well as a private entry to the generous in-law suite, which includes a great room with kitchen as well as a bedroom.



MAIN LEVEL



IN-LAW SUITE



CONTACT

T +1.615.436.6850

E info@thetroubadourclub.com

TROUBADOUR GOLF AND FIELD CLUB

8000 Club View Dr

College Grove, TN 37046



These materials and the features and amenities described and depicted herein are based upon current development plans, which are subject to change without notice. Obtain the property report required by applicable government authorities before signing anything. No governmental agency has judged the merits or value, if any, of this property. This material shall not constitute an offer to sell in any state where prior registration is required.