

BLUEFIELD



TROUBADOUR

Spectacular golf course views throughout the entire home are a highlight of Bluefield. With over 4,500 square feet, this spacious design features a master bedroom and additional bedroom on the main level. The upper level includes two large bedrooms with full baths, as well as an additional living room.



FLOOR PLANS

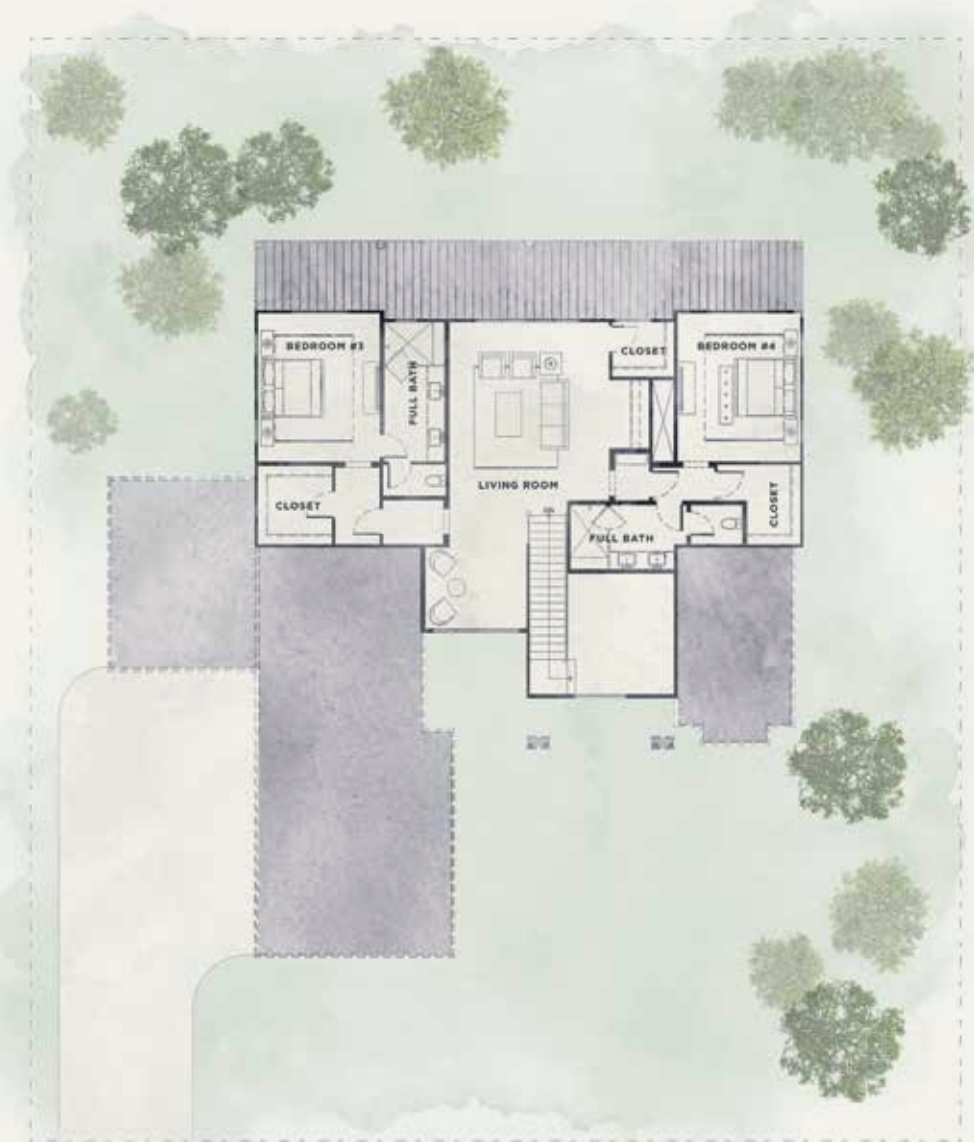
Total SQ Footage: 4,537 SF **Bedrooms:** 4
Main Level: 2,600 SF **Bathrooms:** 5
Upper Level: 1,937 SF

BLUEFIELD

Each bedroom include a large walk-in closet and private bathroom with a walk-in shower and double vanity, while the master bath on the main level also has a free-standing specialty tub. With a wet bar in the living room downstairs, a wine cellar, and a mud/laundry room with an office and lockers, this home is built for families to live, work, and play.



MAIN LEVEL



UPPER LEVEL



CONTACT

T +1.615.436.6850

E info@thetroubadourclub.com

TROUBADOUR GOLF AND FIELD CLUB

8000 Club View Dr

College Grove, TN 37046



These materials and the features and amenities described and depicted herein are based upon current development plans, which are subject to change without notice. Obtain the property report required by applicable government authorities before signing anything. No governmental agency has judged the merits or value, if any, of this property. This material shall not constitute an offer to sell in any state where prior registration is required.