



TROUBADOUR

# Woodmont

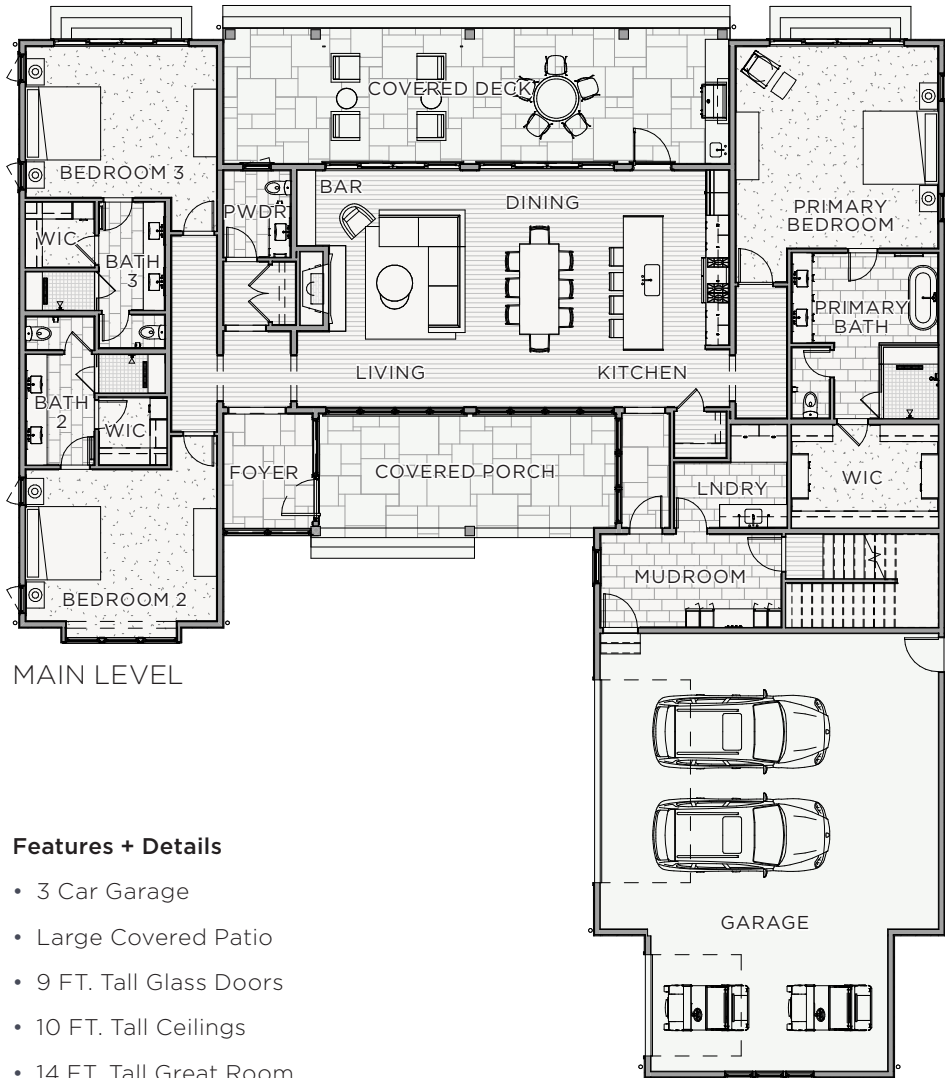
The Woodmont features 4,083 square feet of living space with an inviting open floor plan. A glass gallery leads into the 14-foot-tall great room living-dining-kitchen area with a private primary suite on one side and two spacious bedroom suites on the other. A large, covered patio accessed from the main living area makes outdoor entertaining ideal. Additionally, there is a large in-law suite above the three car garage.



# Woodmont

**Total Square Footage:** 4,083 SQ. FT.  
**Area Under Roof:** 6,113 SQ. FT.  
**Bedrooms:** 4  
**Bathrooms:** 4 Full, 1 Half

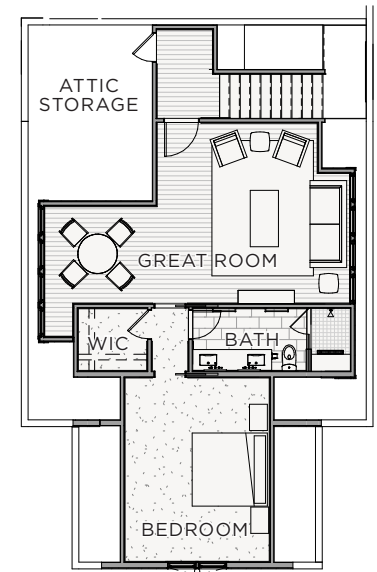
**Main Level:** 3,260 SQ. FT.  
**In-Law Suite:** 823 SQ. FT.



MAIN LEVEL

## Features + Details

- 3 Car Garage
- Large Covered Patio
- 9 FT. Tall Glass Doors
- 10 FT. Tall Ceilings
- 14 FT. Tall Great Room
- Wood Shake Roofing



UPPER IN-LAW SUITE



**TROUBADOUR**

Troubadour Golf & Field Club  
8000 Club View Dr  
College Grove, TN 37046

(615) 436-6851  
sales@thetroubadourclub.com  
thetroubadourclub.com

---

Discovery Tennessee Realty, LLC  
(480) 624-5200

These materials and the features and amenities described and depicted herein are based upon current development plans, which are subject to change without notice. Obtain the property report required by applicable government authorities before signing anything. No governmental agency has judged the merits or value, if any, of this property. This material shall not constitute an offer to sell in any state where prior registration is required.