



TROUBADOUR

## Wedgewood

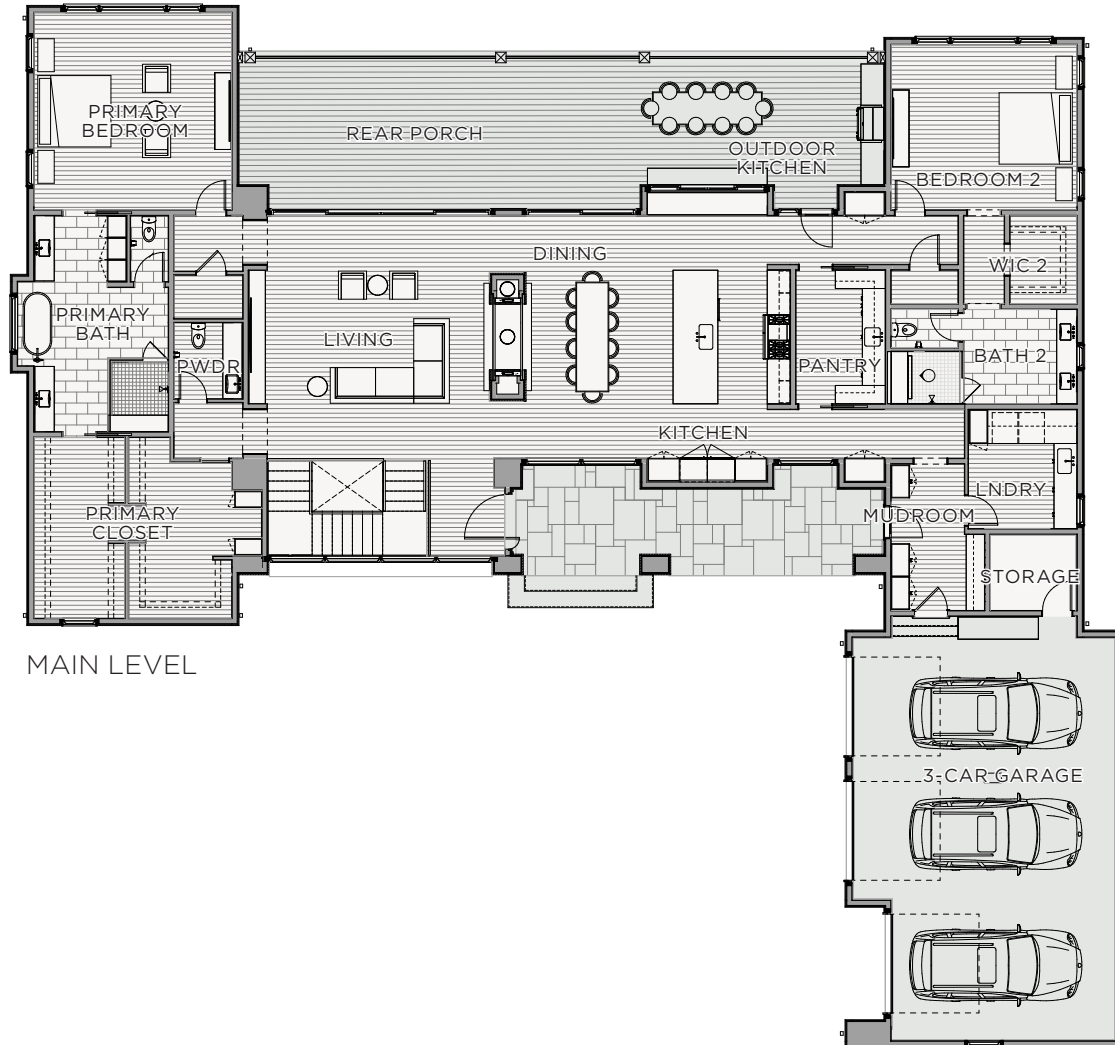
The Wedgewood floor plan features 6,235 square feet of heated space, an open floor plan, and five-bedroom suites, each with walk-in closets and bathrooms. The main level covered porch shelters the entry and leads to a 20-foot-tall great room interior with a wood ceiling. This opens up to a gracious rear-covered outdoor living area with built-in BBQ. Take the floating stairs down to the lower-level, hosting ample entertainment space with sliding glass doors leading out to another large covered outdoor living area. The Wedgewood floor plan is perfect for families and those who love entertaining or want open space to enjoy.



# Wedgewood

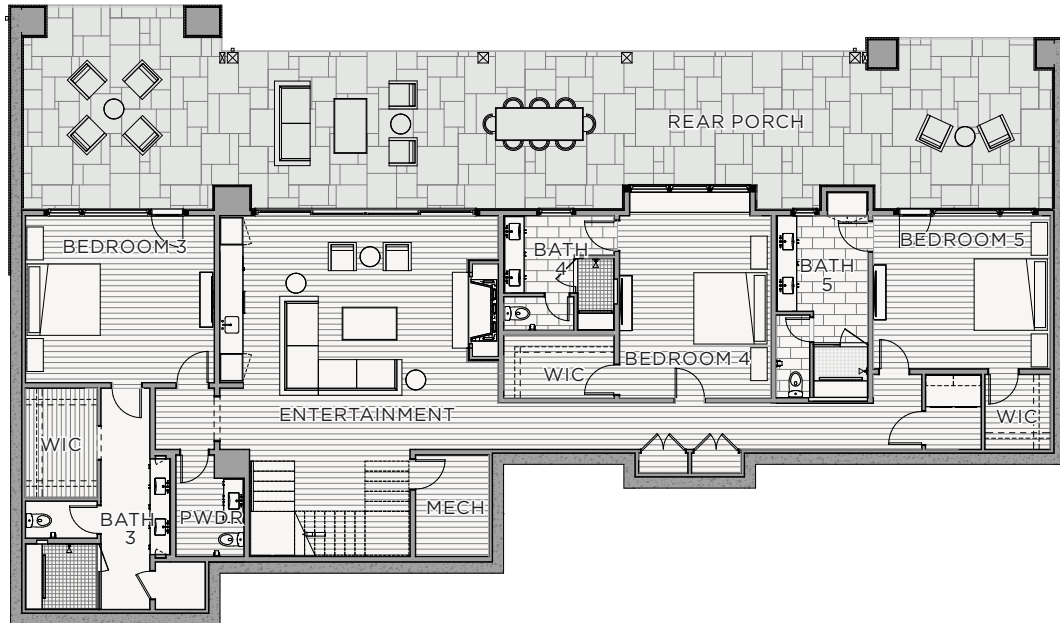
**Total Square Footage:** 6,235 SQ. FT.  
**Area Under Roof:** 10,052 SQ. FT.  
**Bedrooms:** 5  
**Bathrooms:** 5 Full, 2 Half

**Main Level:** 3,567 SQ. FT.  
**Lower Level:** 2,668 SQ. FT.



MAIN LEVEL

# Wedgewood



LOWER LEVEL

## Features + Details

- Large glass doors and windows that offer stunning views and natural light
- Walk-out basement floorplan with a lower level entertainment room
- 5 full bedroom suites complete with walk-in closets and bathrooms
- 20 FT. Tall Vaulted Great Room Ceilings
- Large primary suite with his-her closets and a freestanding tub
- 2-level extra-large covered outdoor living space



**TROUBADOUR**

Troubadour Golf & Field Club  
8000 Club View Dr  
College Grove, TN 37046

(615) 436-6851  
sales@thetroubadourclub.com  
thetroubadourclub.com

---

Discovery Tennessee Realty, LLC  
(480) 624-5200

These materials and the features and amenities described and depicted herein are based upon current development plans, which are subject to change without notice. Obtain the property report required by applicable government authorities before signing anything. No governmental agency has judged the merits or value, if any, of this property. This material shall not constitute an offer to sell in any state where prior registration is required.

09/23 