



TROUBADOUR

Sylvan

Welcome home to the picture-perfect Sylvan, designed for the modern homebuyer and appointed with the finest features to create a private haven for the whole family. Five bedrooms provide ample space for family and guests, with large walk-in closets to accommodate every wardrobe. A primary suite wing includes a generous bathroom and office space. Entertaining is easy in the great room and media room, which boast large dining and living spaces. High ceilings and glass illuminate every inch of this family-friendly footprint with natural light and a casual ambiance.



Sylvan

Gable Roof

Total Square Footage: 7,027 SQ. FT.
Area Under Roof: 9,053 SQ. FT.
Bedrooms: 5
Bathrooms: 5 Full, 3 Half

Main Level: 3,980 SQ. FT.
Upper Level A: 1,292 SQ. FT.
Upper Level B: 1,427 SQ. FT.



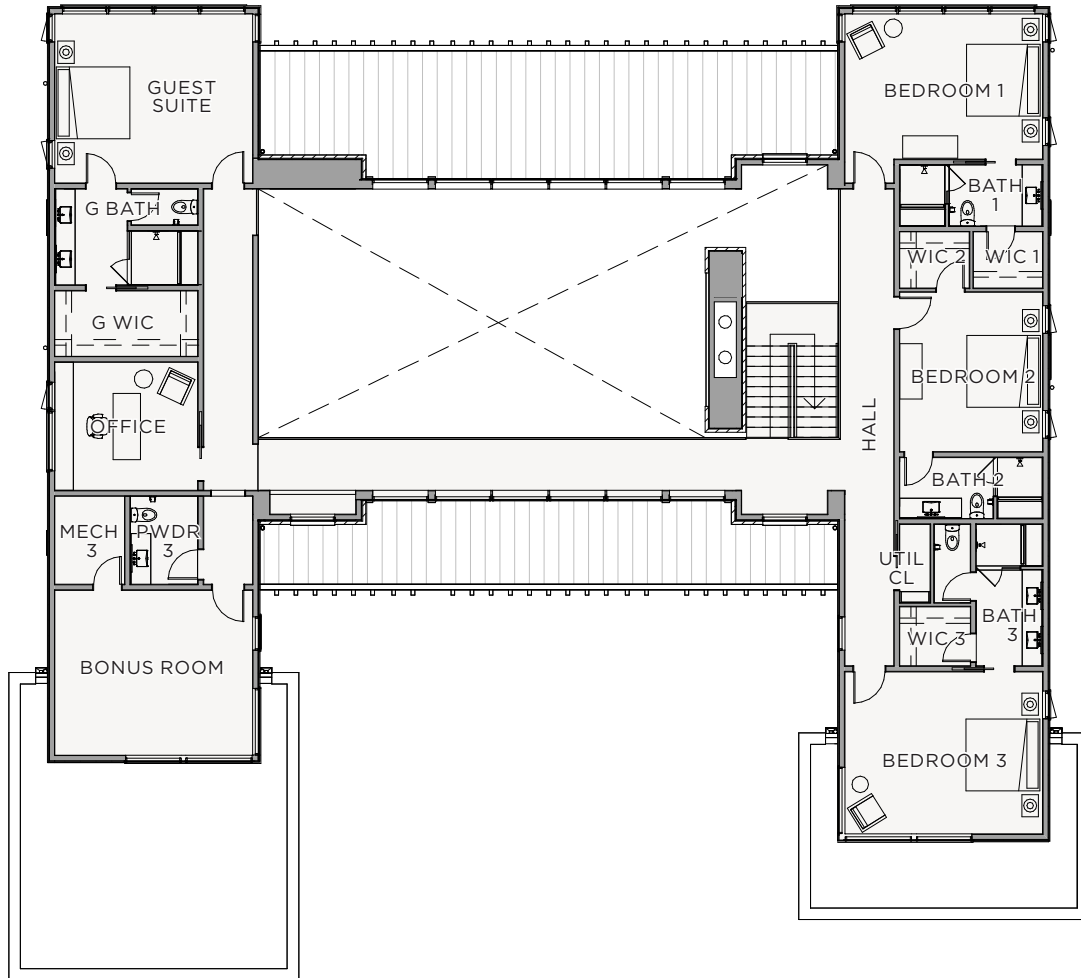
MAIN LEVEL

Sylvan

Gable Roof

Features + Details

- Large Primary Suite Wing
- Media Room with Full Bar
- Front and Rear Covered Porches
- Junior Primary Suite
- Open Floor Plan



UPPER LEVEL

Sylvan

Flat Roof

Total Square Footage: 6,998 SQ. FT.

Area Under Roof: 8,976 SQ. FT.

Bedrooms: 6

Bathrooms: 6 Full, 2 Half

Main Level: 4,072 SQ. FT.

Upper Level A: 1,128 SQ. FT.

Upper Level B: 1,553 SQ. FT.



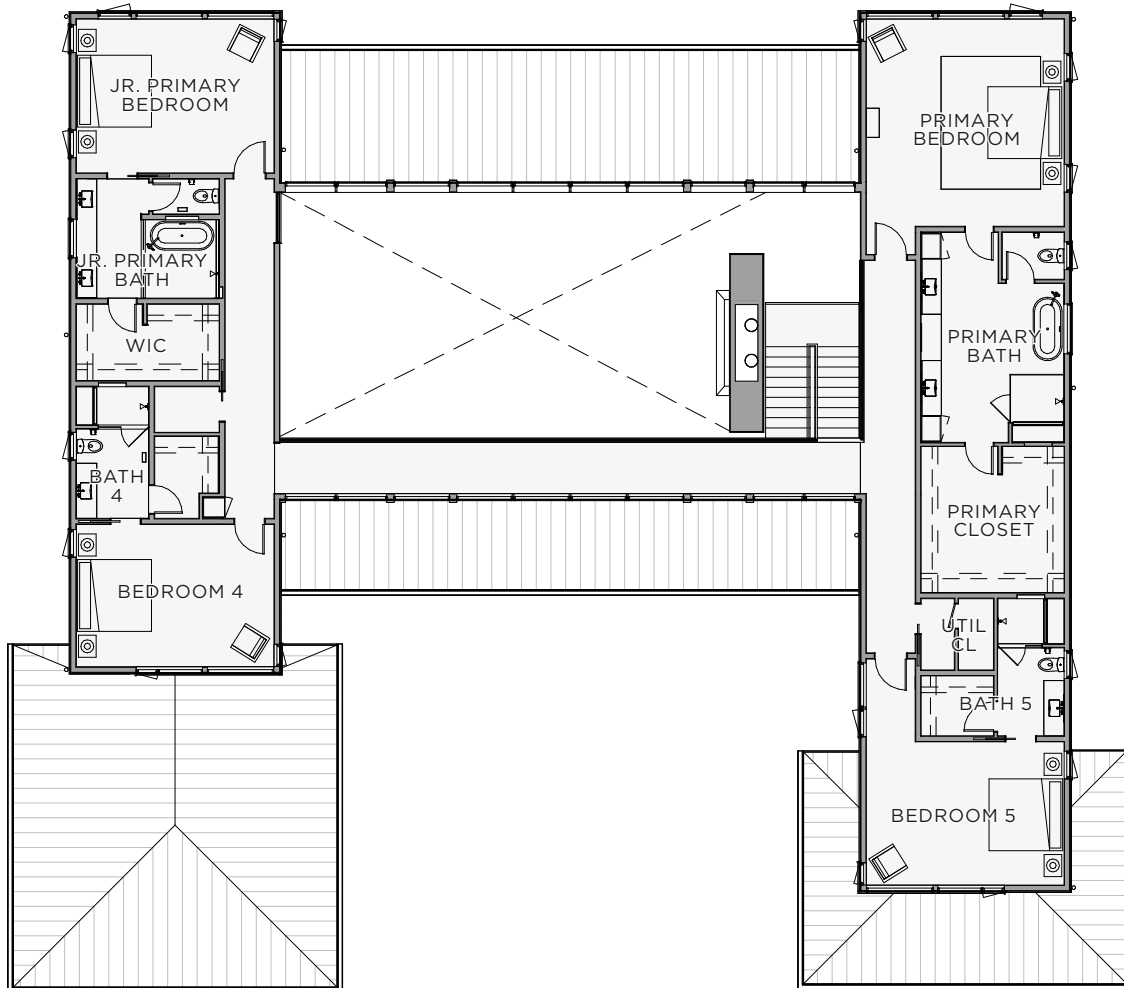
MAIN LEVEL

Sylvan

Flat Roof

Features + Details

- Large Primary Suite Wing
- Media Room with Full Bar
- Front and Rear Covered Porches
- Junior Primary Suite
- Open Floor Plan



UPPER LEVEL



TROUBADOUR

Troubadour Golf & Field Club
8000 Club View Dr
College Grove, TN 37046

(615) 436-6851
sales@thetroubadourclub.com
thetroubadourclub.com

Discovery Tennessee Realty, LLC
(480) 624-5200

These materials and the features and amenities described and depicted herein are based upon current development plans, which are subject to change without notice. Obtain the property report required by applicable government authorities before signing anything. No governmental agency has judged the merits or value, if any, of this property. This material shall not constitute an offer to sell in any state where prior registration is required.