



TROUBADOUR

Nash

The Nash offers 5,684 square feet of heated space, ideal for entertaining friends and family. On the main level, the dining, living, and kitchen areas provide an ideal gathering place for private chef-prepared dinners or cozy evenings in. The main level also features a spacious primary suite, an office, a media room with a wet bar, and a second bedroom suite. The floating staircase leads to a second living room with a fireplace. It is adjacent to three large bedroom suites and an additional laundry room, making a total of five bedrooms.



Nash

Total Square Footage: 5,684 SQ. FT.

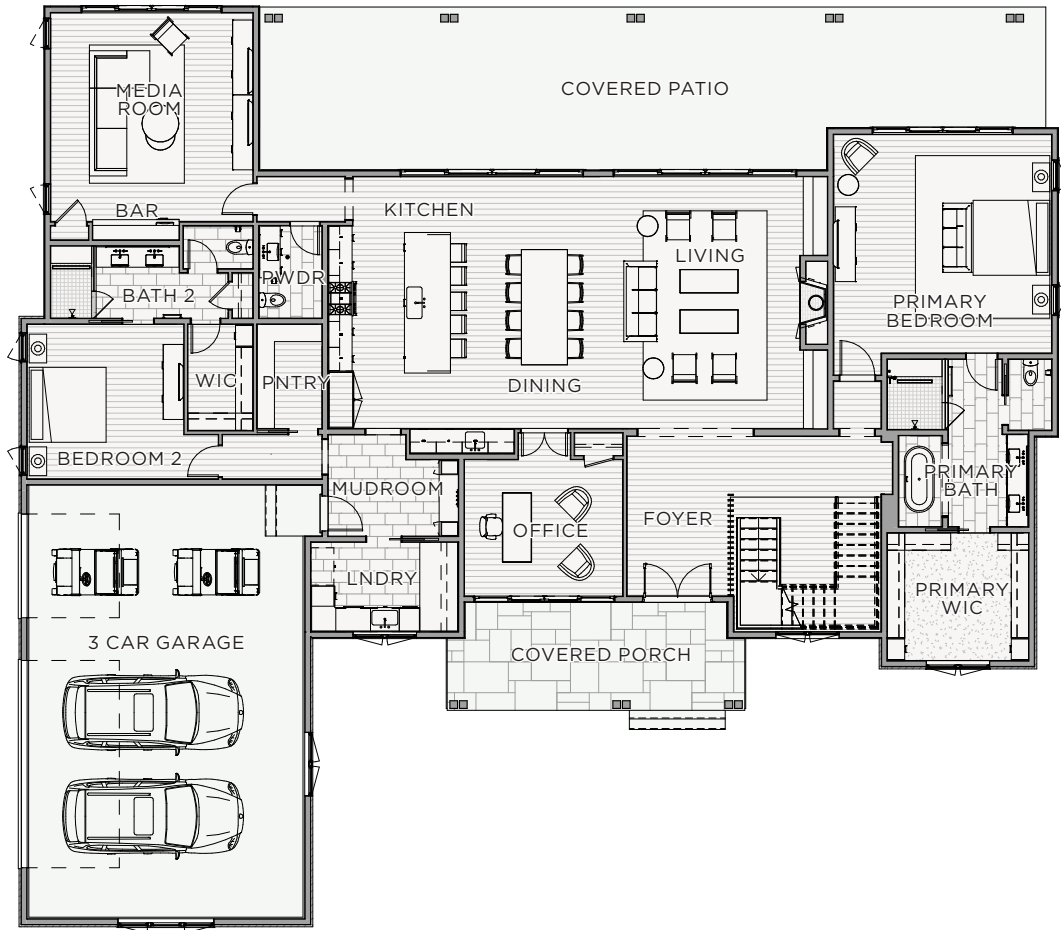
Main Level: 3,556 SQ. FT.

Area Under Roof: 7,787 SQ. FT.

Upper Level: 2,128 SQ. FT.

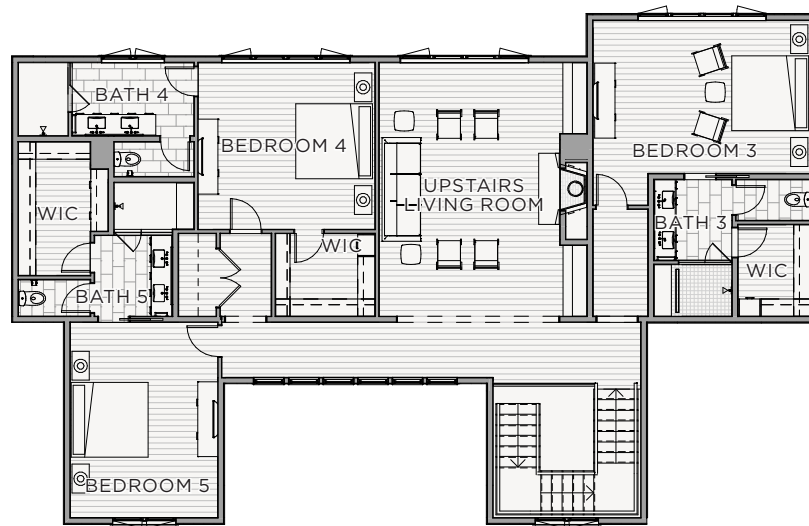
Bedrooms: 5

Bathrooms: 5 Full, 1 Half



MAIN LEVEL

Nash



UPPER LEVEL

Features + Details

- 3 Car Garage
- Large Primary Suite
- Office
- Media Room with Wet Bar
- Extra Laundry Room Upstairs
- 9 FT. Tall Glass Doors
- 10 FT. Tall Ceilings
- 10 FT. Tall Great Room Ceiling
- 15 FT. Upstairs Living Room Ceiling
- Wood Shake Roofing



TROUBADOUR

Troubadour Golf & Field Club
8000 Club View Dr
College Grove, TN 37046

(615) 436-6851
sales@thetroubadourclub.com
thetroubadourclub.com

Discovery Tennessee Realty, LLC
(480) 624-5200

These materials and the features and amenities described and depicted herein are based upon current development plans, which are subject to change without notice. Obtain the property report required by applicable government authorities before signing anything. No governmental agency has judged the merits or value, if any, of this property. This material shall not constitute an offer to sell in any state where prior registration is required.

09/23

