



TROUBADOUR

# Harpeth

Filled with natural light and favored views from the large windows and sliding glass doors, the open-plan living spaces are like a breath of fresh air to brighten every day at Troubadour. The Harpeth conveniently welcomes you and your guests with an inviting covered entry porch allowing direct access to main level living or upstairs. The chef's quality kitchen is the focal space for new memories of home-cooked meals served in the casual open dining room. The living room is ample for lounging or entertaining, while a large media room allows for the fun to continue. The primary suite wing includes a spa-like bathroom and spacious walk-in closet. The Harpeth is ideal for enjoying life's pleasures with the ones you love most.



# Harpeth

**Total Square Footage:** 6,385 SQ. FT.

**Main Level:**

3,373 SQ. FT.

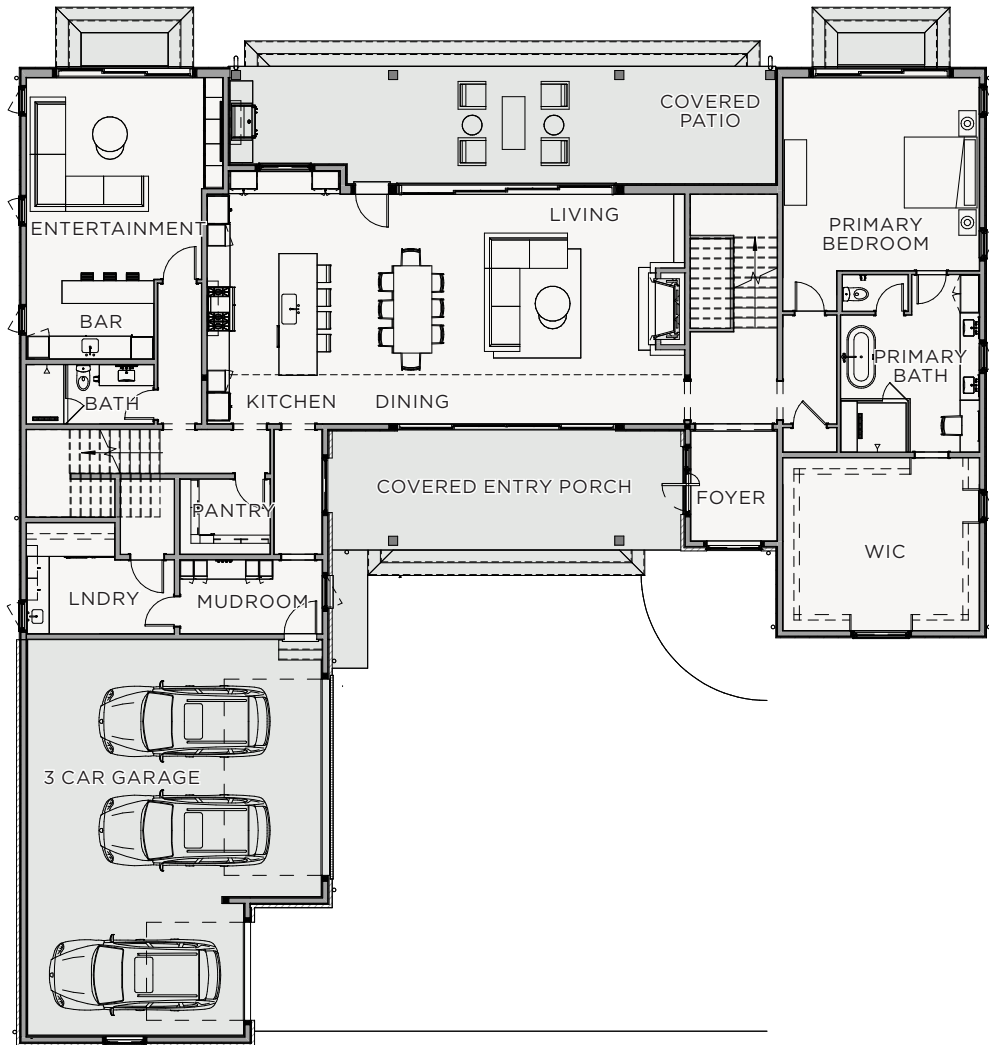
**Area Under Roof:** 8,419 SQ. FT.

**Upper Level:**

3,012 SQ. FT.

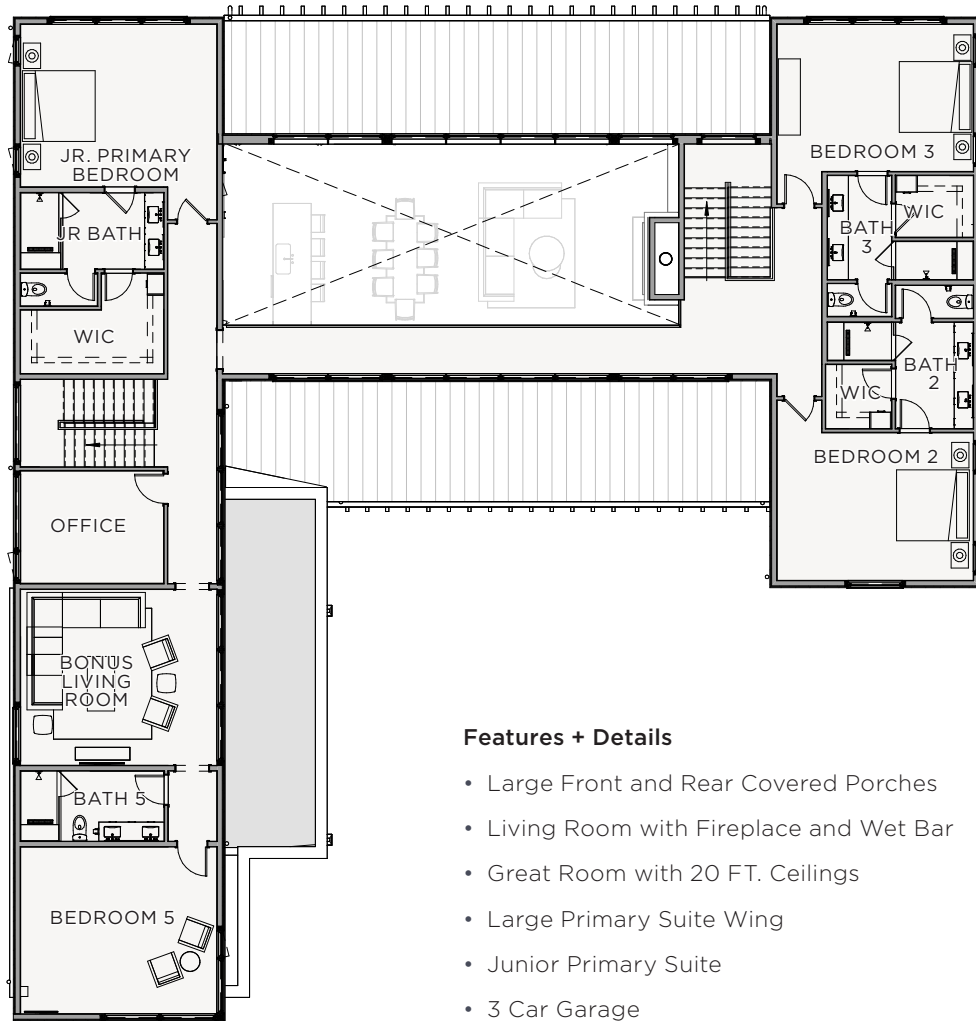
**Bedrooms:** 5

**Bathrooms:** 5 Full, 1 Half



MAIN LEVEL

# Harpeth



UPPER LEVEL

## Features + Details

- Large Front and Rear Covered Porches
- Living Room with Fireplace and Wet Bar
- Great Room with 20 FT. Ceilings
- Large Primary Suite Wing
- Junior Primary Suite
- 3 Car Garage



**TROUBADOUR**

Troubadour Golf & Field Club  
8000 Club View Dr  
College Grove, TN 37046

(615) 436-6851  
sales@thetroubadourclub.com  
thetroubadourclub.com

---

Discovery Tennessee Realty, LLC  
(480) 624-5200

These materials and the features and amenities described and depicted herein are based upon current development plans, which are subject to change without notice. Obtain the property report required by applicable government authorities before signing anything. No governmental agency has judged the merits or value, if any, of this property. This material shall not constitute an offer to sell in any state where prior registration is required.

10/23

