



TROUBADOUR

FARMSTEAD CABINS

Gibson

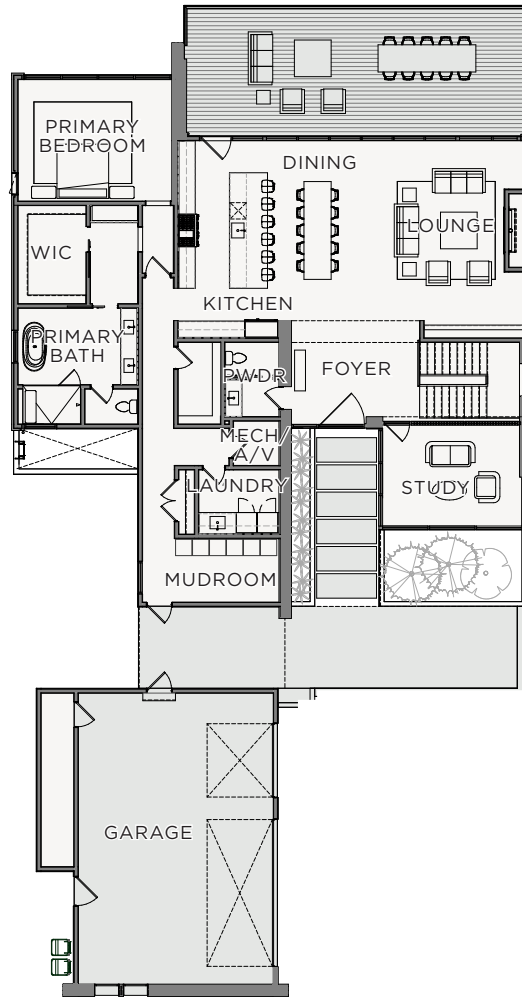
Like its namesake, Gibson at Troubadour Golf & Field Club is a classic. This modern, cabin-style home is designed to entertain with stylish luxuries to complement Troubadour's classic lifestyle. Floor-to-ceiling windows fill the living spaces with natural light, offering spectacular views throughout all 5,574 square feet. The design of Gibson provides ample personal space for your family and guests, so everyone feels at home.



Gibson

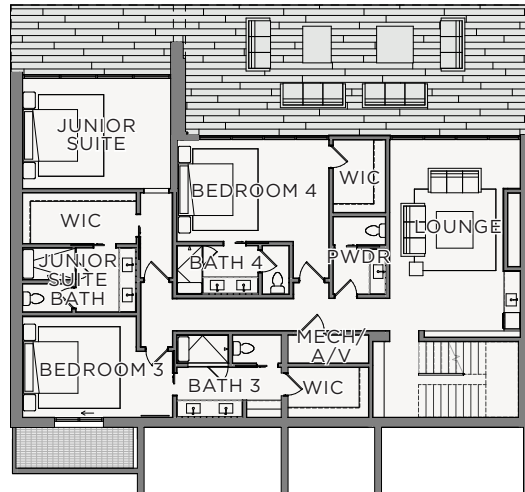
Total Square Footage: 5,574 sq ft
Bedrooms: 4
Bathrooms: 4 Full, 2 Half

Main Level: 3,114 sq ft
Lower Level: 2,460 sq ft



MAIN LEVEL

Gibson



LOWER LEVEL

Main Level Options

- Enlarged Primary Bedroom
- Chef's Kitchen
- Enlarged Mudroom & Laundry
- Additional Bedroom
- Gym
- Enlarged Study
- Outdoor Kitchen

Lower Level Options

- Enlarged Jr. Suite
- Bunk Room
- Wine Cellar
- Media Room
- Enlarged Lounge & Bedroom

Loft Options

- Loft Entrance
- In-Law Suite
- Double Suite
- Bunk Room
- Golf Simulator

Options extending the main floor footprint of the residence requires the adjacent floor level to extend equally.
The options for customizing the residence may not be available on each lot. Residence restrictions can be found in the lot portfolio.



TROUBADOUR

Troubadour Golf & Field Club
8000 Club View Dr
College Grove, TN 37046

(615) 436-6851
sales@thetroubadourclub.com
thetroubadourclub.com

Discovery Tennessee Realty, LLC
(480) 624-5200

These materials and the features and amenities described and depicted herein are based upon current development plans, which are subject to change without notice. Obtain the property report required by applicable government authorities before signing anything. No governmental agency has judged the merits or value, if any, of this property. This material shall not constitute an offer to sell in any state where prior registration is required.

07/24

