



TROUBADOUR

Elliston

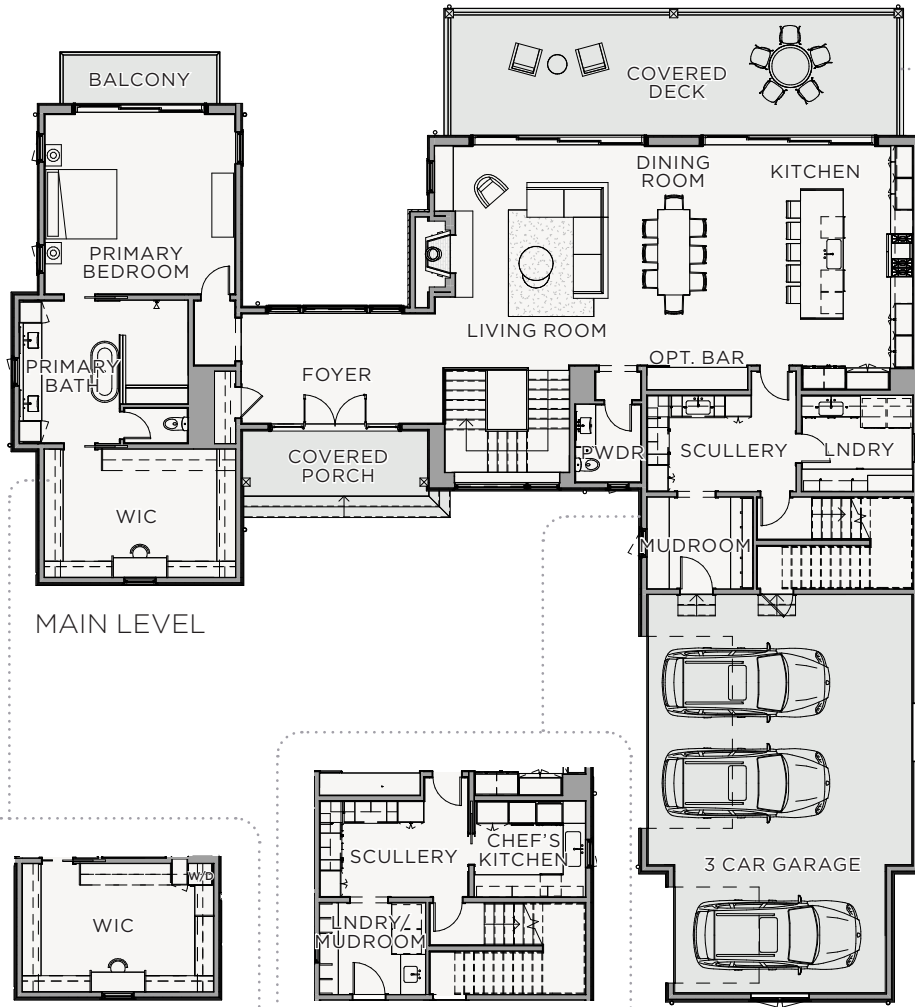
The two-level design of the 5,684-square-foot Elliston features a large glass entry gallery leading into an open floor plan with a living-dining-kitchen great room on the right and a private primary suite on the left. Tall glass doors graciously open to the outdoor terrace and covered dining patio showcasing expansive views of Troubadour's rolling hills and pristine golf course. The lower-level features 10-foot-high ceilings, two additional full-bedroom suites with dual vanities and walk-in closets, and a second living area with a fireplace and a broad outdoor patio for lounging and entertaining.



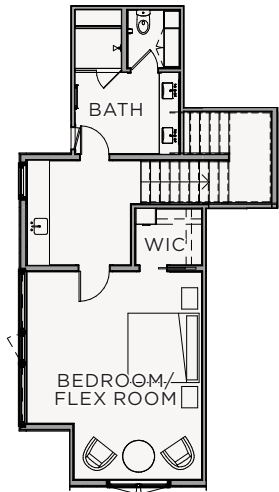
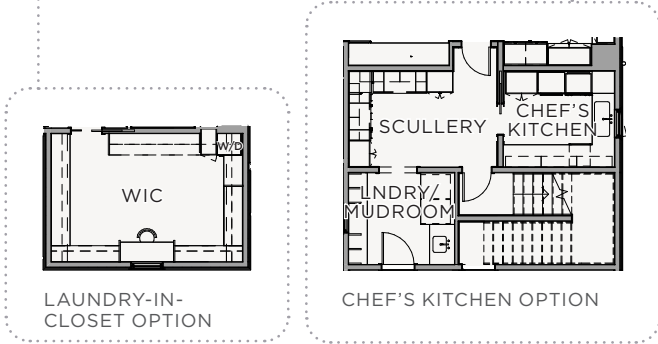
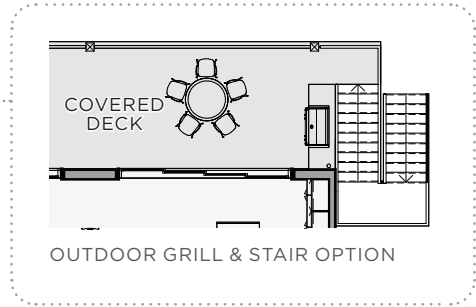
Elliston

Total Square Footage: 5,684 SQ. FT.
Area Under Roof: 6,615 SQ. FT.
Bedrooms: 4
Bathrooms: 4 Full, 2 Half

Main Level: 2,710 SQ. FT.
Lower Level: 2,339 SQ. FT.
Upper In-Law Suite: 635 SQ. FT.

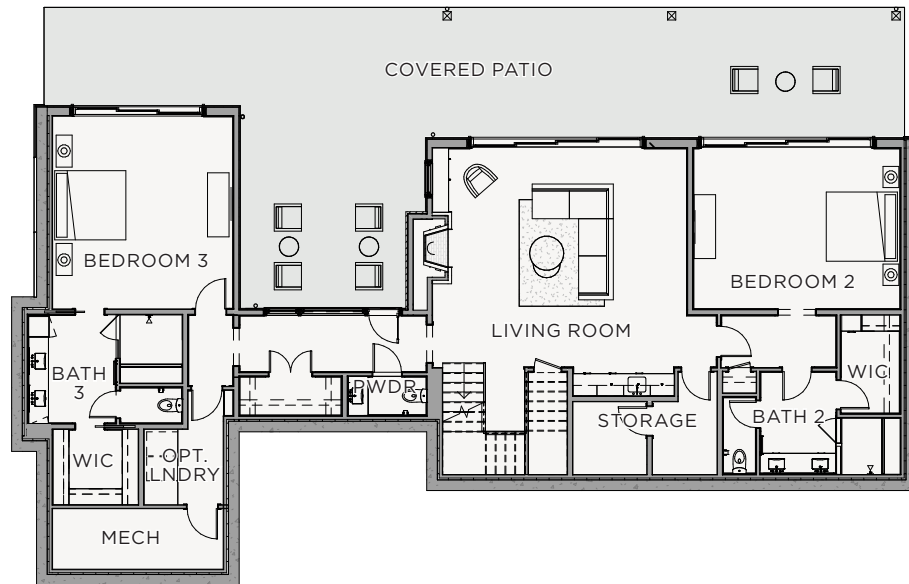


MAIN LEVEL



UPPER IN-LAW SUITE

Elliston



LOWER LEVEL

Features + Details

- Kitchen Scullery
- 3 Car Garage
- Large In-Law Suite
- 9 FT. Tall Glass Doors
- 10 FT. Tall Ceilings
- 20 FT. Tall Vaulted Great Room Ceiling
- 16 FT. Tall Vaulted Primary Bedroom Ceiling
- Wood Shake Roofing



TROUBADOUR

Troubadour Golf & Field Club
8000 Club View Dr
College Grove, TN 37046

(615) 436-6851
sales@thetroubadourclub.com
thetroubadourclub.com

Discovery Tennessee Realty, LLC
(480) 624-5200

These materials and the features and amenities described and depicted herein are based upon current development plans, which are subject to change without notice. Obtain the property report required by applicable government authorities before signing anything. No governmental agency has judged the merits or value, if any, of this property. This material shall not constitute an offer to sell in any state where prior registration is required.

09/23

