



TROUBADOUR

Berry

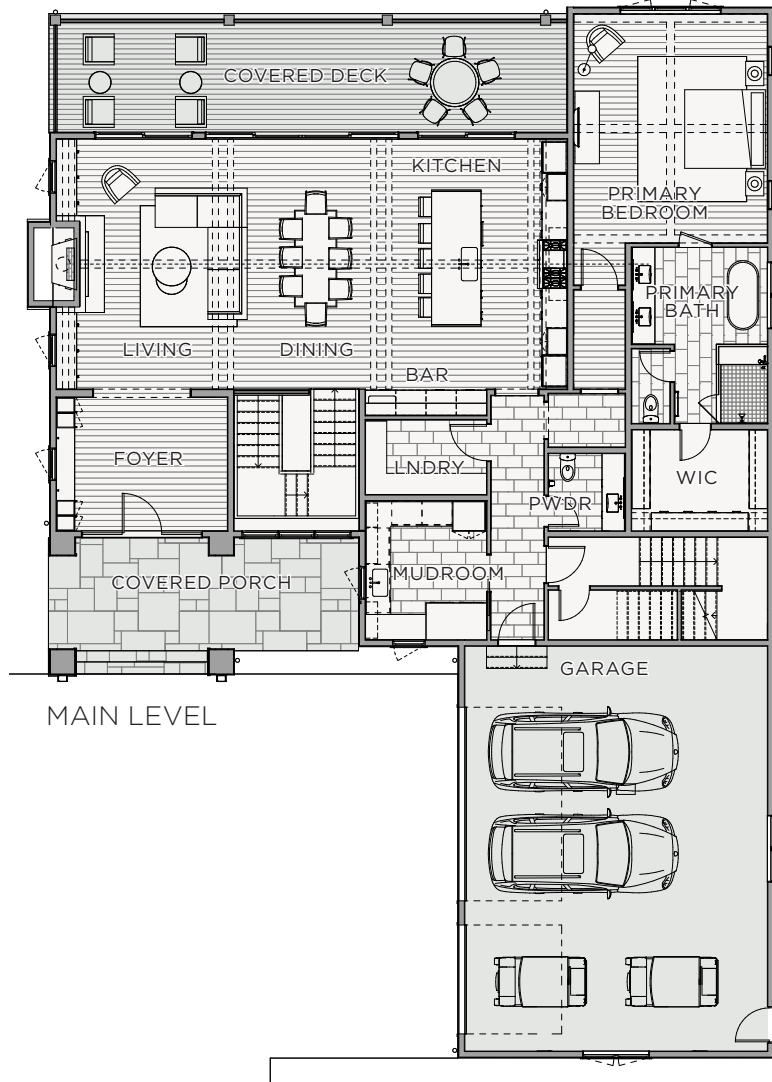
Enter the covered front porch and glass entry foyer into a light-filled living-dining-kitchen open plan. The rolling hills of Troubadour can be viewed from the expansive covered terrace of the Berry. Its 5,577 square feet make entertaining easy. The home features a 20-foot-tall great room with a vaulted ceiling, a spacious primary bedroom suite on the main level, three large bedrooms on the lower level, and a large in-law suite on the upper level.



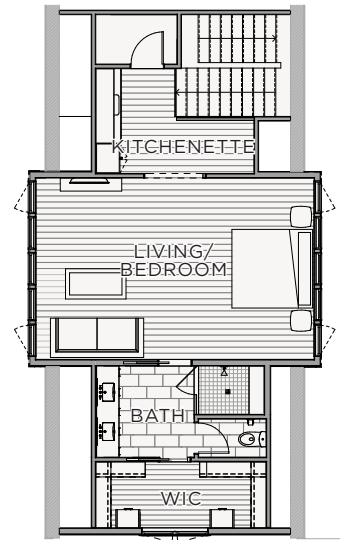
Berry

Total Square Footage: 5,577 SQ. FT.
Area Under Roof: 7,567 SQ. FT.
Bedrooms: 5
Bathrooms: 5 Full, 2 Half

Main Level: 2,497 SQ. FT.
Lower Level: 2,635 SQ. FT.
Upper In-Law Suite: 715 SQ. FT.

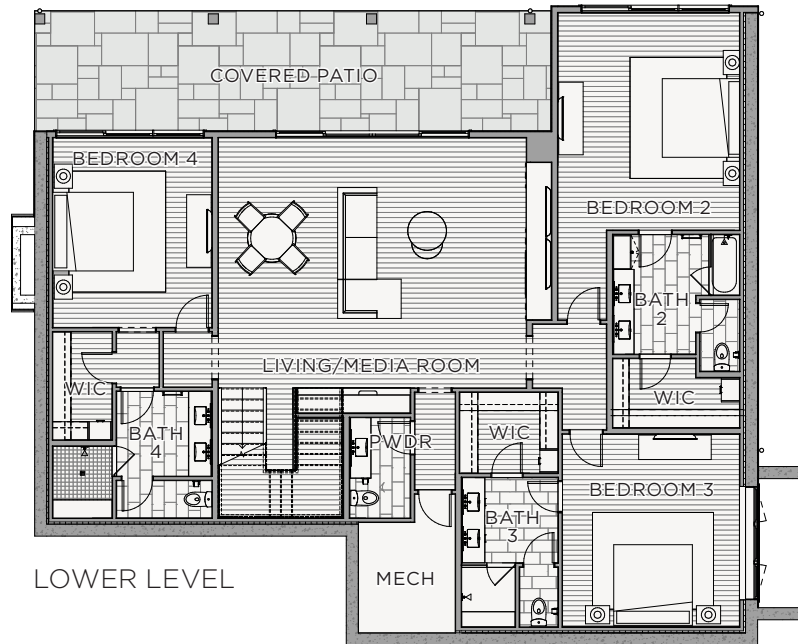


MAIN LEVEL



UPPER IN-LAW SUITE

Berry



Features + Details

- 3 Car Garage
- Lower Level Living Room with Wet Bar
- Large In-Law Suite
- 9 FT. Tall Glass Doors
- 10 FT. Tall Ceilings
- 20 FT. Tall Vaulted Great Room Ceiling
- Vaulted Primary Bedroom Ceiling
- Wood Shake Roofing



TROUBADOUR

Troubadour Golf & Field Club
8000 Club View Dr
College Grove, TN 37046

(615) 436-6851
sales@thetroubadourclub.com
thetroubadourclub.com

Discovery Tennessee Realty, LLC
(480) 624-5200

These materials and the features and amenities described and depicted herein are based upon current development plans, which are subject to change without notice. Obtain the property report required by applicable government authorities before signing anything. No governmental agency has judged the merits or value, if any, of this property. This material shall not constitute an offer to sell in any state where prior registration is required.