



TROUBADOUR

Arrington

The Arrington floor plan has four bedrooms and four full and one half bath, a first-floor primary suite, open-concept kitchen with dining area and great room, generous walk-in closet space, and much more. This 3,827-square-foot home features a walk-out basement and covered porch, ideal for entertaining or just relaxing outdoors.



Arrington

Total Square Footage: 3,827 SQ. FT.

Main Level: 2,325 SQ. FT.

Area Under Roof: 5,862 SQ. FT.

Lower Level: 1,501 SQ. FT.

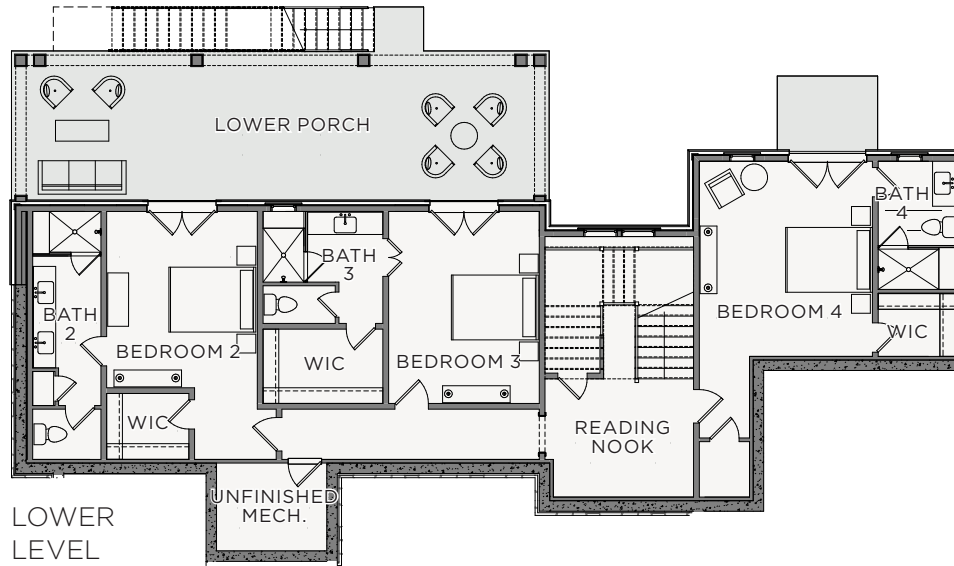
Bedrooms: 4

Bathrooms: 4 Full, 1 Half



MAIN LEVEL

Arrington



Features + Details

- Main Level Wet Bar
- Lower Level Walk-Out Bedroom Suites
- 9 FT. Tall Exterior Doors
- 16 FT. Tall Vaulted Great Room, Dining Room, Kitchen, and Primary Bedroom Ceilings



TROUBADOUR

Troubadour Golf & Field Club
8000 Club View Dr
College Grove, TN 37046

(615) 436-6851
sales@thetroubadourclub.com
thetroubadourclub.com

Discovery Tennessee Realty, LLC
(480) 624-5200

These materials and the features and amenities described and depicted herein are based upon current development plans, which are subject to change without notice. Obtain the property report required by applicable government authorities before signing anything. No governmental agency has judged the merits or value, if any, of this property. This material shall not constitute an offer to sell in any state where prior registration is required.

01/24 