



TROUBADOUR

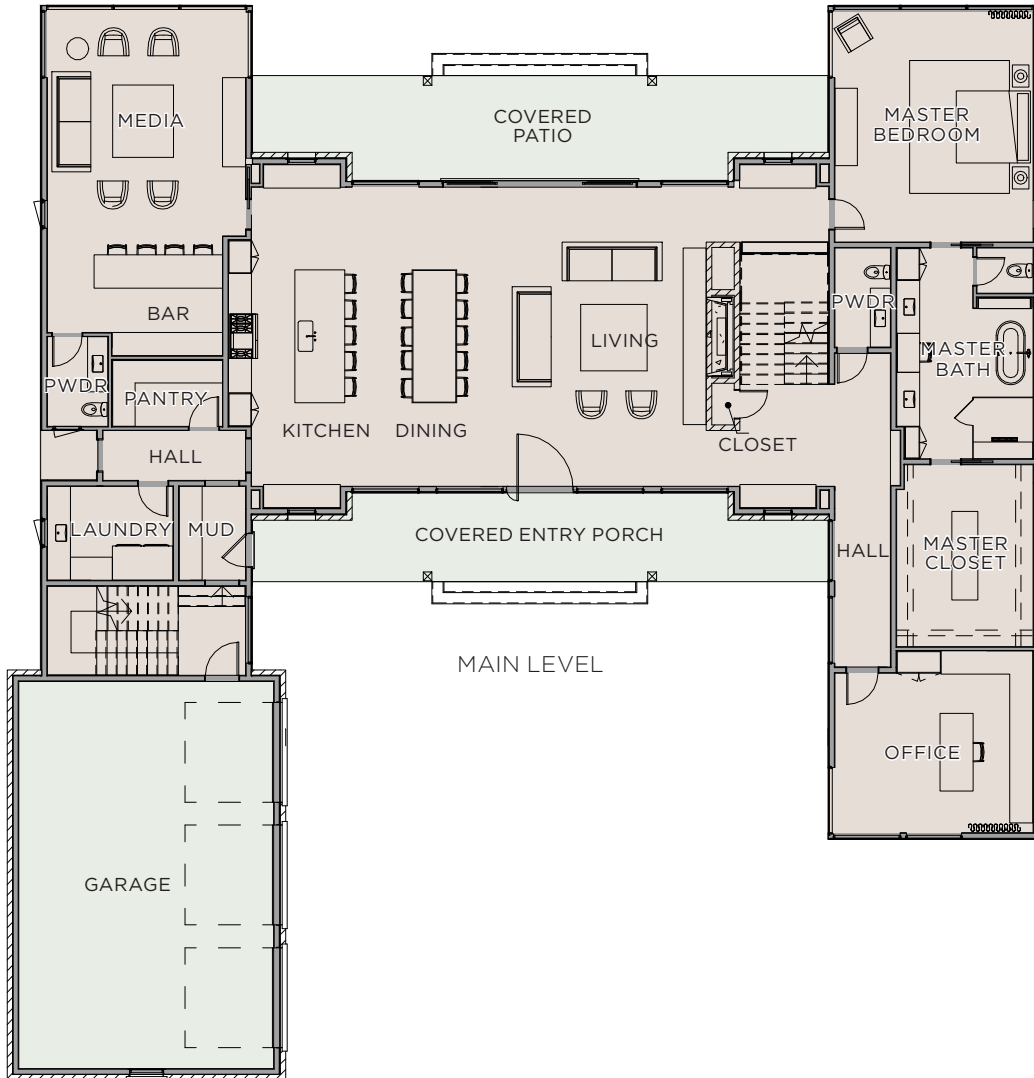
MODERN ESTATE

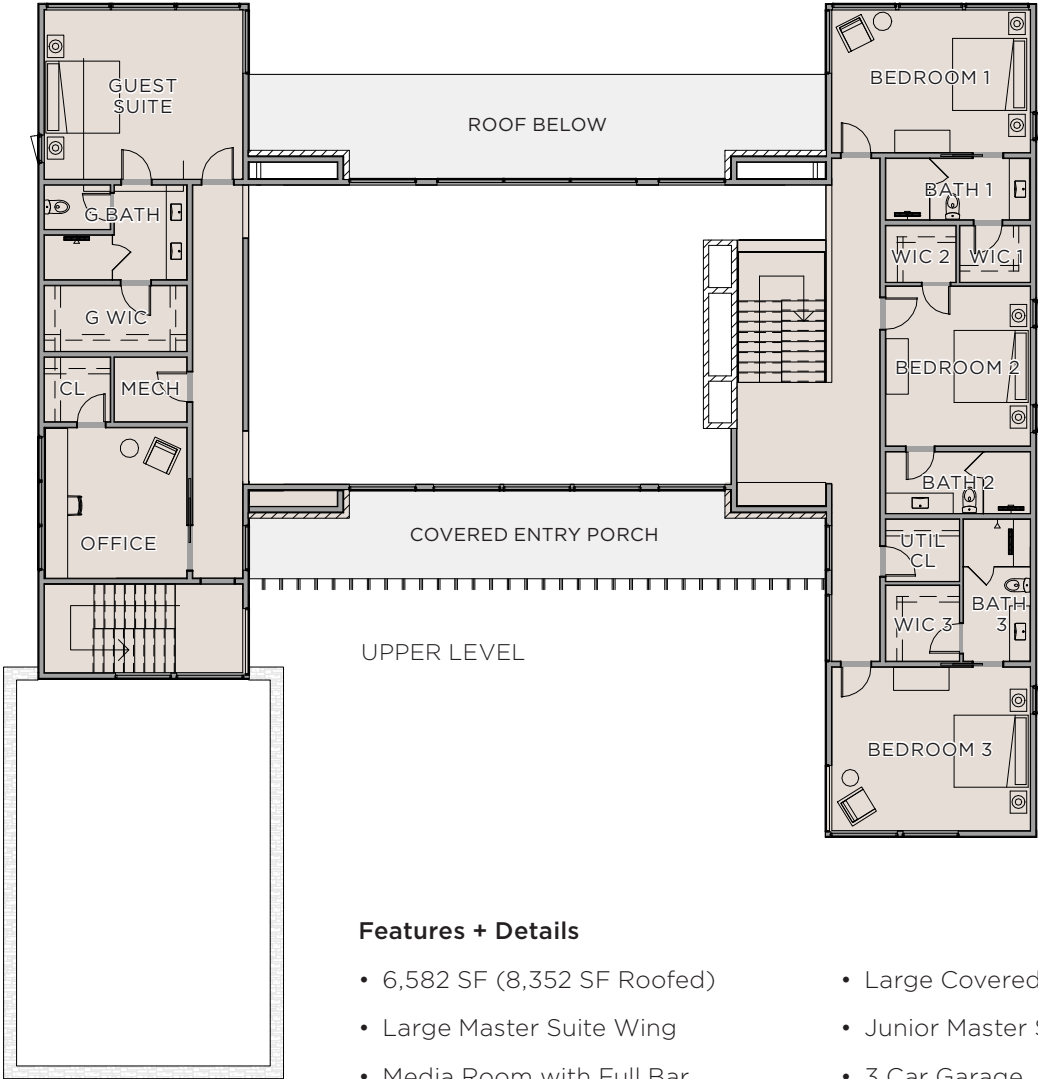
Welcome home to the picture-perfect Modern Estate, designed for the modern homebuyer and appointed with the finest features to create a private haven for the whole family. Five bedrooms provide ample space for family and guests with large walk-in closets to accommodate every wardrobe. A primary suite wing includes a generous bathroom and office space. Entertaining is easy in the great room and media room, which boast large dining and living spaces. High ceilings and high glass illuminate every inch of this family-friendly footprint with natural light and casual ambiance.



FLOOR PLANS

Total SQ Footage: 6,582 SF **Bedrooms:** 5
Main Level: 4,084 SF **Bathrooms:** 5.5
Upper Level: 2,565 SF





Features + Details

- 6,582 SF (8,352 SF Roofed)
- Large Master Suite Wing
- Media Room with Full Bar
- Large Covered Porch
- Junior Master Suite
- 3 Car Garage



CONTACT

T +1.615.436.6851

E sales@thetroubadourclub.com

TROUBADOUR GOLF AND FIELD CLUB

8000 Club View Dr

College Grove, TN 37046



These materials and the features and amenities described and depicted herein are based upon current development plans, which are subject to change without notice. Obtain the property report required by applicable government authorities before signing anything. No governmental agency has judged the merits or value, if any, of this property. This material shall not constitute an offer to sell in any state where prior registration is required.

Discovery Tennessee Realty, LLC
T: 1.480.624.5200

