

7060 Lanceleaf Drive



TROUBADOUR



7060 Lanceleaf Drive

Welcome to this stunning custom-built residence in the prestigious Troubadour Golf & Field Club, crafted by Tennessee Valley Homes in 2022. Spanning 5,929 square feet on a 0.45-acre lot, this architectural masterpiece combines modern elegance with timeless design, offering an unparalleled lifestyle in one of Middle Tennessee’s most sought-after communities. This home features five spacious bedrooms, five full bathrooms, and two half baths, providing ample space for family and guests. Step inside to discover an open-concept floor plan flooded with natural light and adorned with wide-plank hardwood floors. The soaring ceilings and exposed beams create a sense of grandeur, while sleek, modern finishes provide a warm and inviting atmosphere. The gourmet kitchen boasts top-of-the-line appliances, a large island, and seamless flow into the dining and living areas—perfect for entertaining.

FEATURES

- Open Concept Kitchen, Living, and Dining
- Office and Wine Cellar/Storage
- Covered Back Porch
- Pool, Hot Tub, and Putting Green
- Outdoor Bar, Grill, and Firepit
- Golf Simulator in Garage
- Overlooking Hole #4

PRICE:	\$7,380,000
TOTAL SQ FT:	5,929
PRICE/SQ FT:	\$1,245
HOMESITE SIZE:	0.45 Acres
HOMESITE NUMBER:	285
BEDROOMS:	5
BATHROOMS:	5 Full, 2 Half
BUILDER:	Tennessee Valley

CLICK TO VIEW MLS LISTING

CLICK TO VIEW PHOTO GALLERY



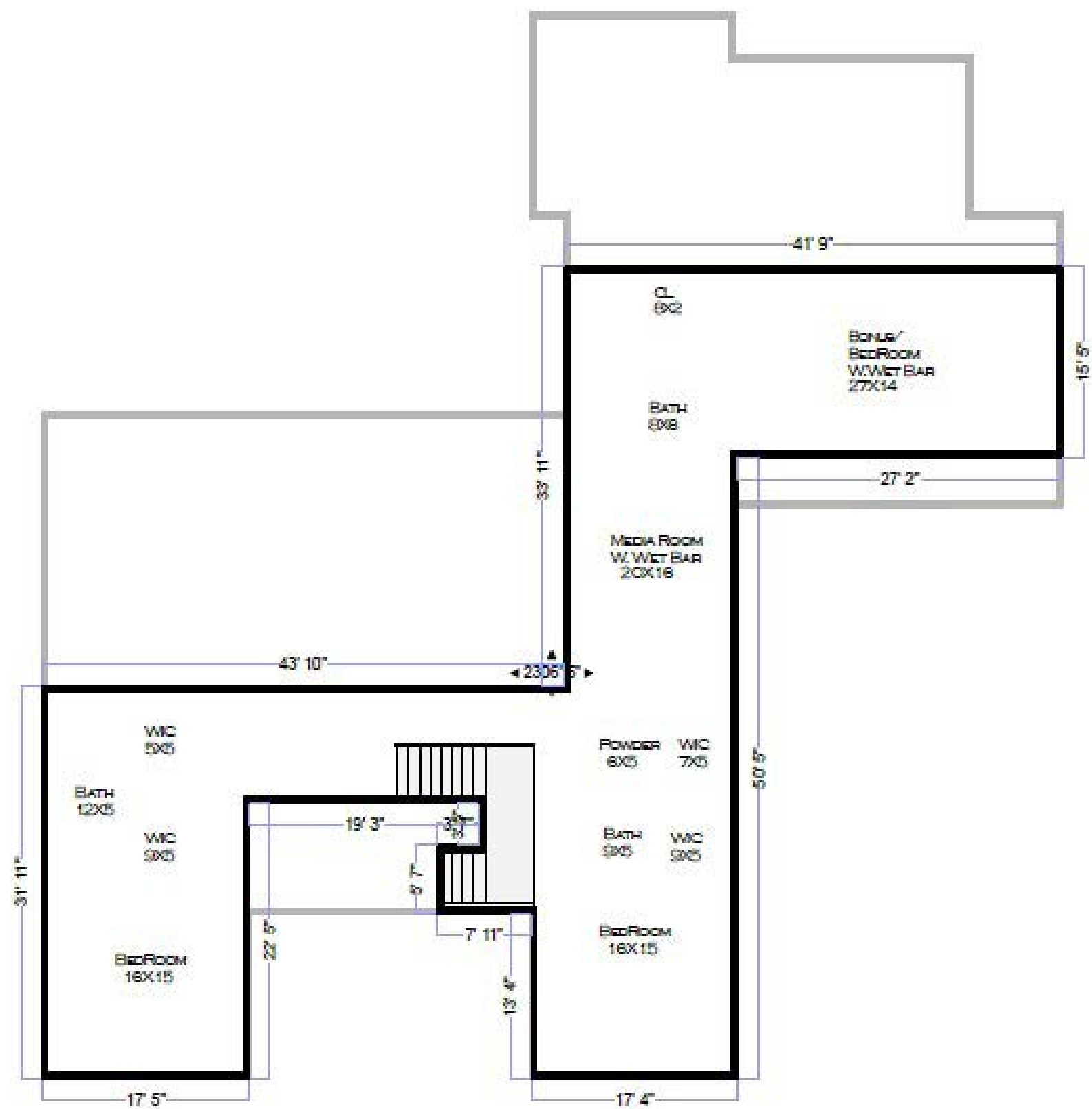
Floor Plan

MAIN LEVEL



Floor Plan

UPPER LEVEL











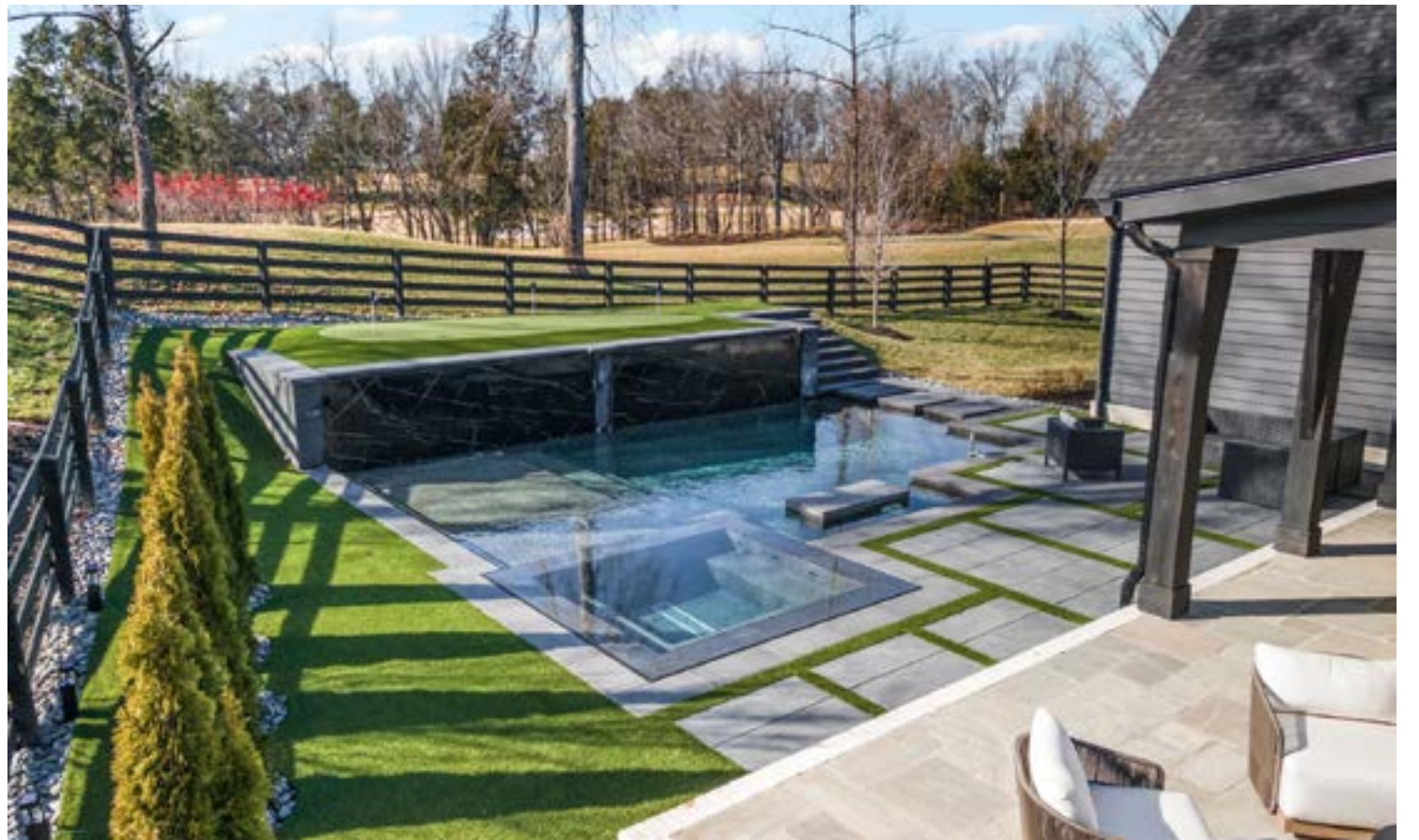












Site Map

- | | | | |
|---|--------------------------------|---|--------------------------------------|
| A | AMPHITHEATER AND WELLNESS | K | SPORT COURTS |
| B | SALES AND DESIGN CENTER | L | LANCELEAF DRIVE ENTRY |
| C | THE HOMESTEAD | M | FARMSTEAD ENTRY |
| D | ROADHOUSE | N | FIELD SPORTS |
| E | LUTHER'S | O | THE GARDEN |
| F | PRACTICE RANGE | P | FAMILY CAMP |
| G | SHORT GAME PRACTICE AREA | Q | THE ROOST |
| H | COMFORT STATION #1 (HOLE #5/6) | R | FUTURE DEVELOPMENT |
| I | TURF CARE AND ADMINISTRATION | S | COMFORT STATION #2 (HOLE #14/15) |
| J | HARLOW DRIVE ENTRY | T | PATTON ROAD ENTRY (MEMBERS & GUESTS) |





At Home In Tennessee

Nestled in the calm rolling countryside, Troubadour Golf & Field Club is an exclusive private residential community that promises days full of laughter and joy with loved ones.

Offering a variety of living options across 860 acres, including cottages, family homes, and estate lots up to two acres, Troubadour provides casual luxury in the countryside with breathtaking views from your patio.

Enjoy a round of golf on the 18-hole Tom Fazio-designed championship course, experience world-class dining from our organic farm, gather with friends for a night of live music, and discover unending outdoor adventure. The smiles are genuine, the adventures are endless, and the memories made at Troubadour will last a lifetime.





For more information on listings, home packages, or club membership, please contact the Tribadour sales office.

Tribadour Golf & Field Club 8000 Club View Drive, College Grove, TN 37046
(615) 436-6851 | sales@thetribadourclub.com | thetribadourclub.com

Discovery Tennessee Realty, LLC | (480) 624-5200