

7066 Lanceleaf Drive



TROUBADOUR



# 7066 Lanceleaf Drive

Welcome to this stunning custom-built residence in the prestigious Troubadour Golf & Field Club, crafted by Tennessee Valley Homes in 2022. Spanning 5,929 square feet on a 0.45-acre lot, this architectural masterpiece combines modern elegance with timeless design, offering an unparalleled lifestyle in one of Middle Tennessee's most sought-after communities. This home features five spacious bedrooms, five full bathrooms, and two half baths, providing ample space for family and guests. Step inside to discover an open-concept floor plan flooded with natural light and adorned with wide-plank hardwood floors. The soaring ceilings and exposed beams create a sense of grandeur, while sleek, modern finishes provide a warm and inviting atmosphere. The gourmet kitchen boasts top-of-the-line appliances, a large island, and seamless flow into the dining and living areas—perfect for entertaining.

## FEATURES

- Open Concept Kitchen, Living, and Dining
- Office and Wine Cellar/Storage
- Screened-In Back Porch
- 2 Fireplaces
- Outdoor Bar, Grill, and Firepit
- Overlooking Hole #4

<b>PRICE:</b>	\$5,950,000
<b>TOTAL SQ FT:</b>	7,063
<b>PRICE/SQ FT:</b>	\$842
<b>HOMESITE SIZE:</b>	0.36 Acres
<b>HOMESITE NUMBER:</b>	284
<b>BEDROOMS:</b>	5
<b>BATHROOMS:</b>	5 Full, 1 Half
<b>BUILDER:</b>	Tennessee Valley

[CLICK TO VIEW MLS LISTING](#)

[CLICK TO VIEW PHOTO GALLERY](#)



# Floor Plan

MAIN LEVEL



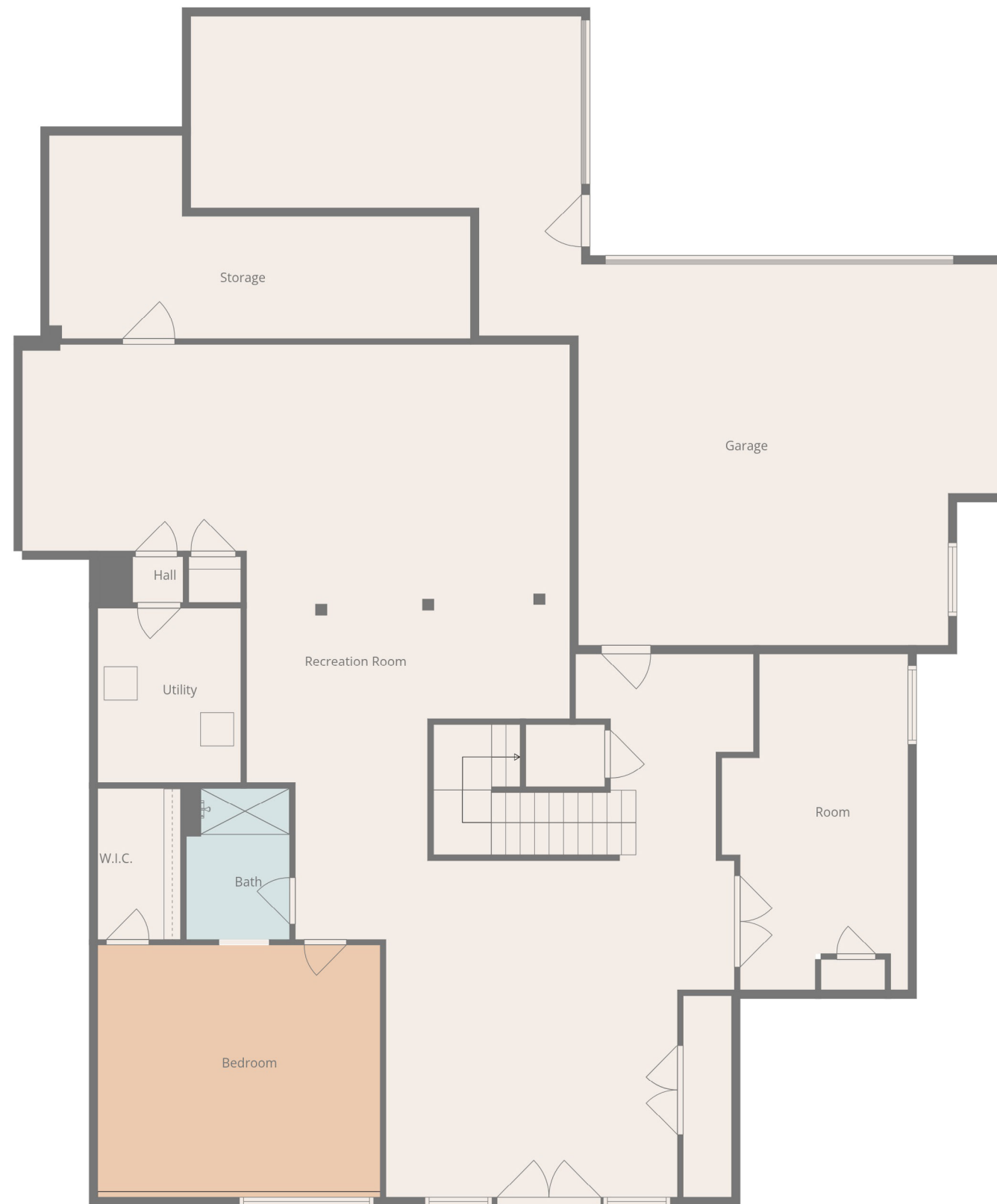
# Floor Plan

UPPER LEVEL



# Floor Plan

BASEMENT LEVEL























# Site Map

- A** AMPHITHEATER AND WELLNESS
- B** SALES AND DESIGN CENTER
- C** THE HOMESTEAD
- D** ROADHOUSE
- E** LUTHER'S
- F** PRACTICE RANGE
- G** SHORT GAME PRACTICE AREA
- H** COMFORT STATION #1 (HOLE #5/6)
- I** TURF CARE AND ADMINISTRATION
- J** HARLOW DRIVE ENTRY
- K** SPORT COURTS
- L** LANCELEAF DRIVE ENTRY
- M** FARMSTEAD ENTRY
- N** FIELD SPORTS
- O** THE GARDEN
- P** FAMILY CAMP
- Q** THE ROOST
- R** FUTURE DEVELOPMENT
- S** COMFORT STATION #2 (HOLE #14/15)
- T** PATTON ROAD ENTRY (MEMBERS & GUESTS)



284



## At Home In Tennessee

Nestled in the calm rolling countryside, Troubadour Golf & Field Club is an exclusive private residential community that promises days full of laughter and joy with loved ones.

Offering a variety of living options across 860 acres, including cottages, family homes, and estate lots up to two acres, Troubadour provides casual luxury in the countryside with breathtaking views from your patio.

Enjoy a round of golf on the 18-hole Tom Fazio-designed championship course, experience world-class dining from our organic farm, gather with friends for a night of live music, and discover unending outdoor adventure. The smiles are genuine, the adventures are endless, and the memories made at Troubadour will last a lifetime.





**TROUBADOUR**

For more information on listings, home packages, or club membership, please contact the Troubadour sales office.

Troubadour Golf & Field Club 8000 Club View Drive, College Grove, TN 37046  
(615) 436-6851 | [sales@thetroubadourclub.com](mailto:sales@thetroubadourclub.com) | [thetroubadourclub.com](http://thetroubadourclub.com)

Discovery Tennessee Realty, LLC | (480) 624-5200