

7045 Lanceleaf Drive



TROUBADOUR



7045 Lanceleaf Drive

Discover the perfect blend of elegance, comfort, and resort-style living in this exceptional custom residence, thoughtfully crafted in 2016 by award-winning builder Legend Homes. Located within the prestigious Troubadour Golf & Field Club, this 5,017-square-foot estate offers 5 spacious bedrooms, 7 luxurious bathrooms, and a thoughtfully designed layout ideal for both everyday living and entertaining. Step outside to your private oasis featuring an expansive covered porch, a lavish pool and hot tub, and an extravagant outdoor bar and grill—perfect for hosting unforgettable gatherings with family and friends.

FEATURES

- Open Concept Kitchen, Living, and Dining
 - Primary Room on Main Floor
 - Outdoor Bar and Grill
 - Screened-In Back Porch with Fireplace
- Pool and Hot Tub
 - Stainless Steel Appliances
 - Brand New Roof Completed in 2025
 - 2 Gas Fireplaces
- Separate Office/Guest Suite with Full Bath
 - Fenced Backyard

PRICE:	\$5,495,000
TOTAL SQ FT:	5,017
PRICE/SQ FT:	\$1,095
HOMESITE SIZE:	0.34 Acres
HOMESITE NUMBER:	216
BEDROOMS:	5
BATHROOMS:	5 Full, 2 Half
BUILDER:	Legend Homes

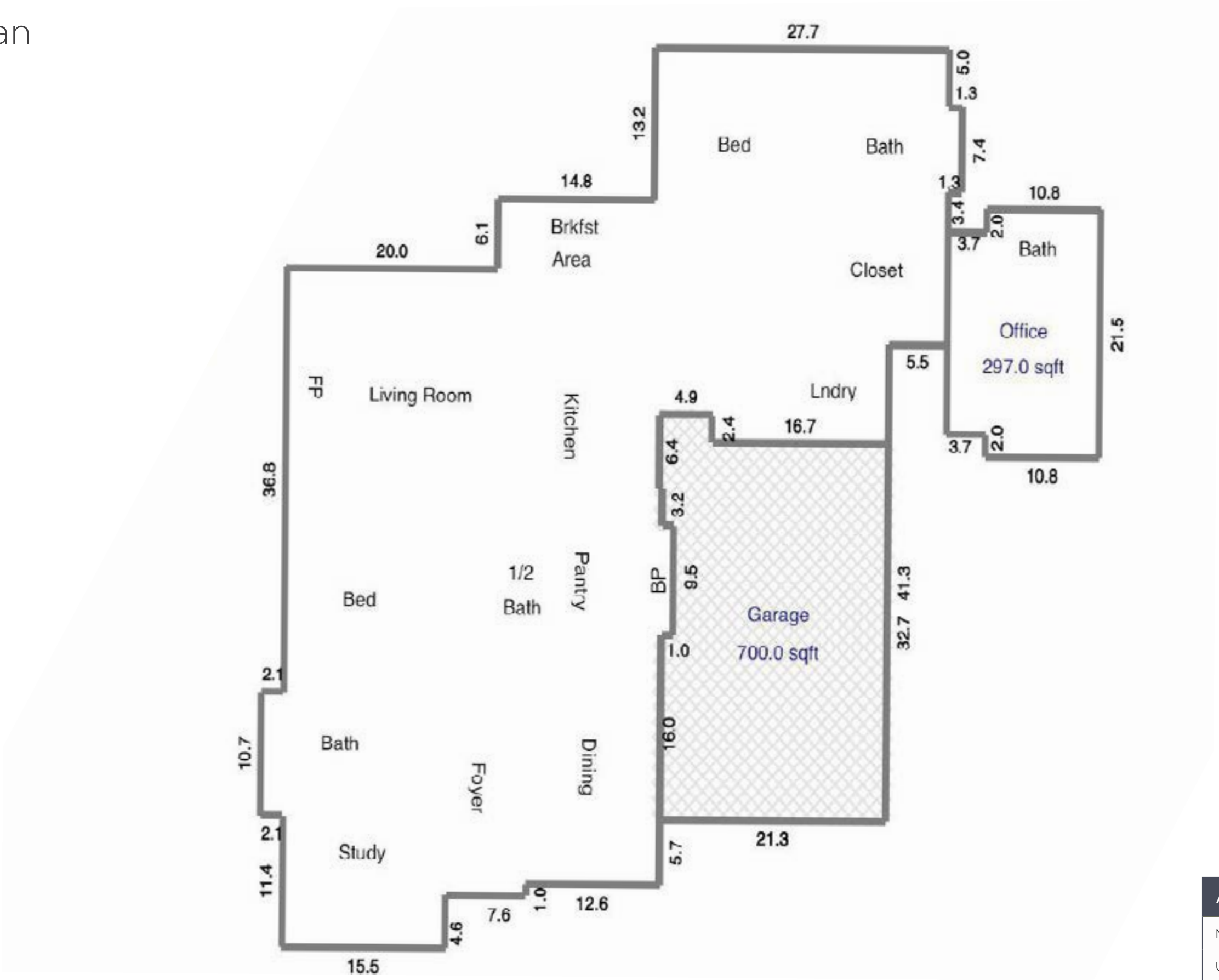
CLICK TO VIEW MLS LISTING

CLICK TO VIEW PHOTO GALLERY



Floor Plan

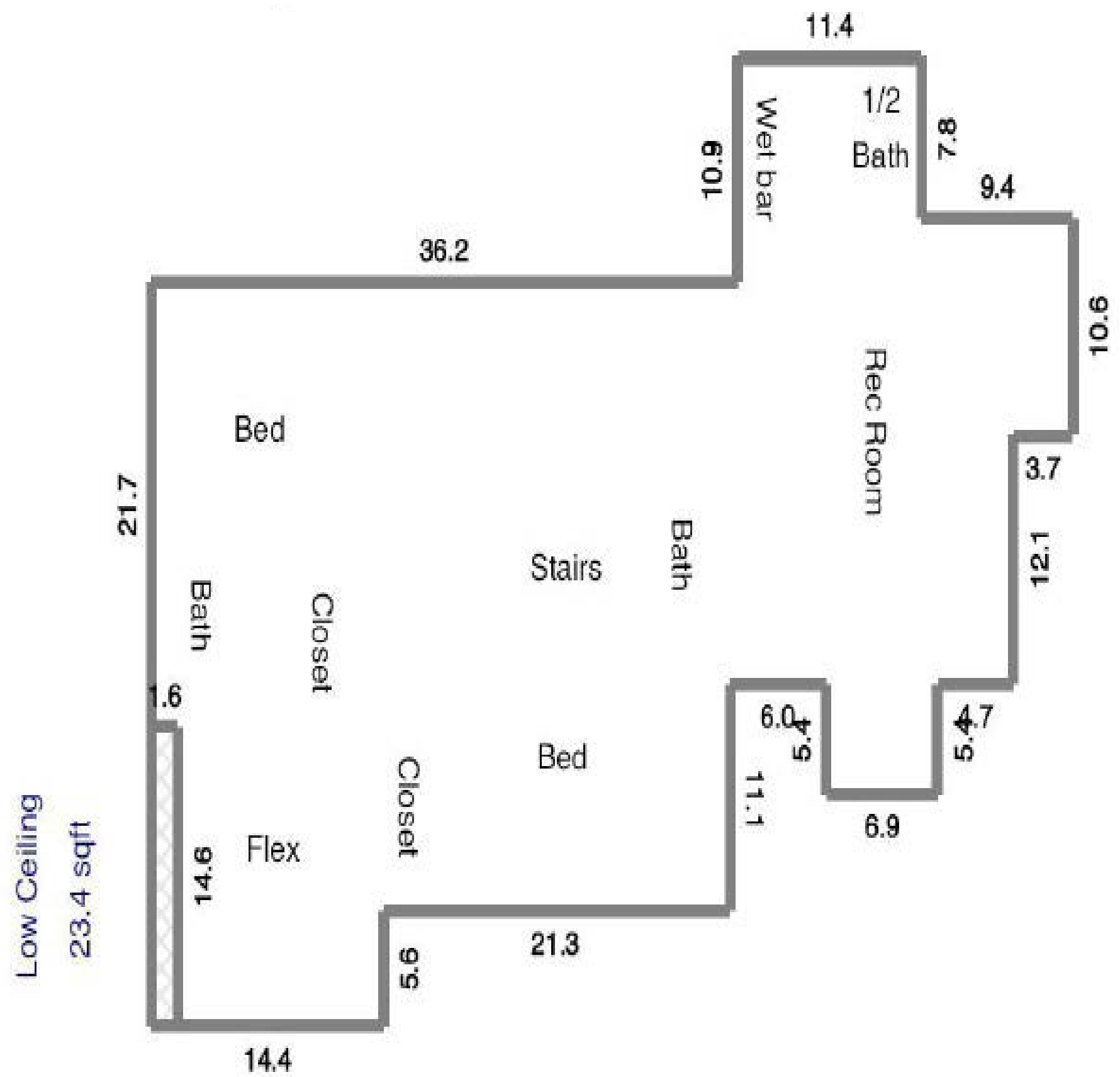
MAIN LEVEL



AREA	SQ FT
Main Floor & Office	3,277
Upper Floor	1,740
Total	5,017

Floor Plan

UPPER LEVEL



AREA	SQ FT
Main Floor & Office	3,277
Upper Floor	1,740
Total	5,017























Site Map

- | | | | |
|---|--------------------------------|---|--------------------------------------|
| A | AMPHITHEATER | K | LANCELEAF DRIVE ENTRY |
| B | SALES AND DESIGN CENTER | L | TROUBADOUR DRIVE |
| C | THE HOMESTEAD | M | FIELD SPORTS |
| D | LUTHER'S | N | THE GARDEN |
| E | PRACTICE RANGE | O | FAMILY CAMP |
| F | SHORT GAME PRACTICE AREA | P | THE ROOST |
| G | COMFORT STATION #1 (HOLE #5/6) | Q | FUTURE DEVELOPMENT |
| H | TURF CARE AND ADMINISTRATION | R | COMFORT STATION #2 (HOLE #14/15) |
| I | HARLOW DRIVE ENTRY | S | PATTON ROAD ENTRY (MEMBERS & GUESTS) |
| J | SPORT COURTS & DISCOVERY FIELD | | |





At Home In Tennessee

Nestled in the calm rolling countryside, Troubadour Golf & Field Club is an exclusive private residential community that promises days full of laughter and joy with loved ones.

Offering a variety of living options across 860 acres, including cottages, family homes, and estate lots up to two acres, Troubadour provides casual luxury in the countryside with breathtaking views from your patio.

Enjoy a round of golf on the 18-hole Tom Fazio-designed championship course, experience world-class dining from our organic farm, gather with friends for a night of live music, and discover unending outdoor adventure. The smiles are genuine, the adventures are endless, and the memories made at Troubadour will last a lifetime.





For more information on listings, home packages, or club membership, please contact the Tribadour sales office.

Tribadour Golf & Field Club 8000 Club View Drive, College Grove, TN 37046
(615) 436-6851 | sales@thetribadourclub.com | thetribadourclub.com

Discovery Tennessee Realty, LLC | (480) 624-5200