



TROUBADOUR

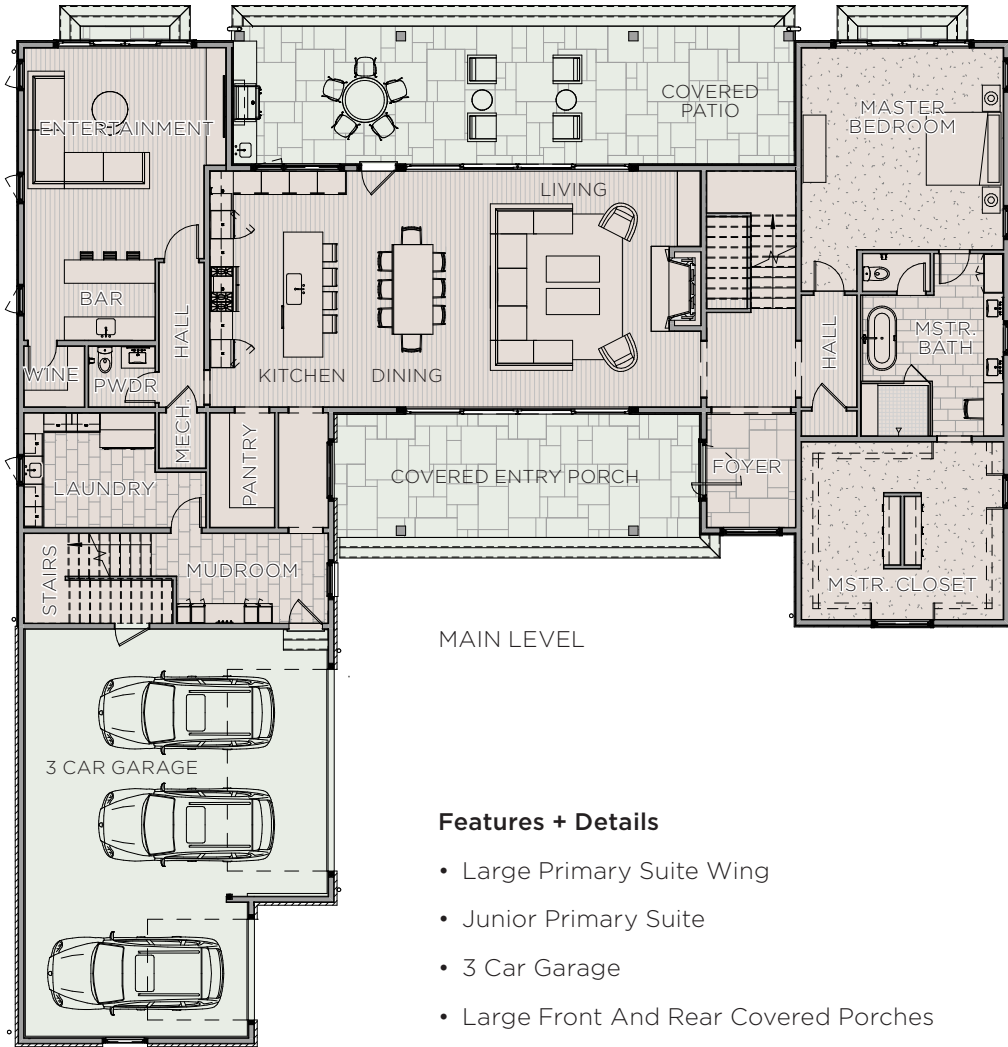
HARPETH

Filled with natural light and favored views from the large windows and sliding glass doors, the open plan living spaces are like a breath of fresh air to brighten every day at Troubadour. The Harpeth conveniently welcomes you and guests with an inviting covered entry porch allowing direct access to main level living or up-stairs. The chef's quality kitchen is the focal space for new memories of home-cooked meals served in the casual open dining room. The living room is ample for lounging or entertaining, while a large media room allows for the fun to continue. The Primary Suite wing includes a spa-like bathroom and spacious walk-in closet. The Harpeth is ideal for enjoying life's pleasures with the ones you love most.



FLOOR PLANS

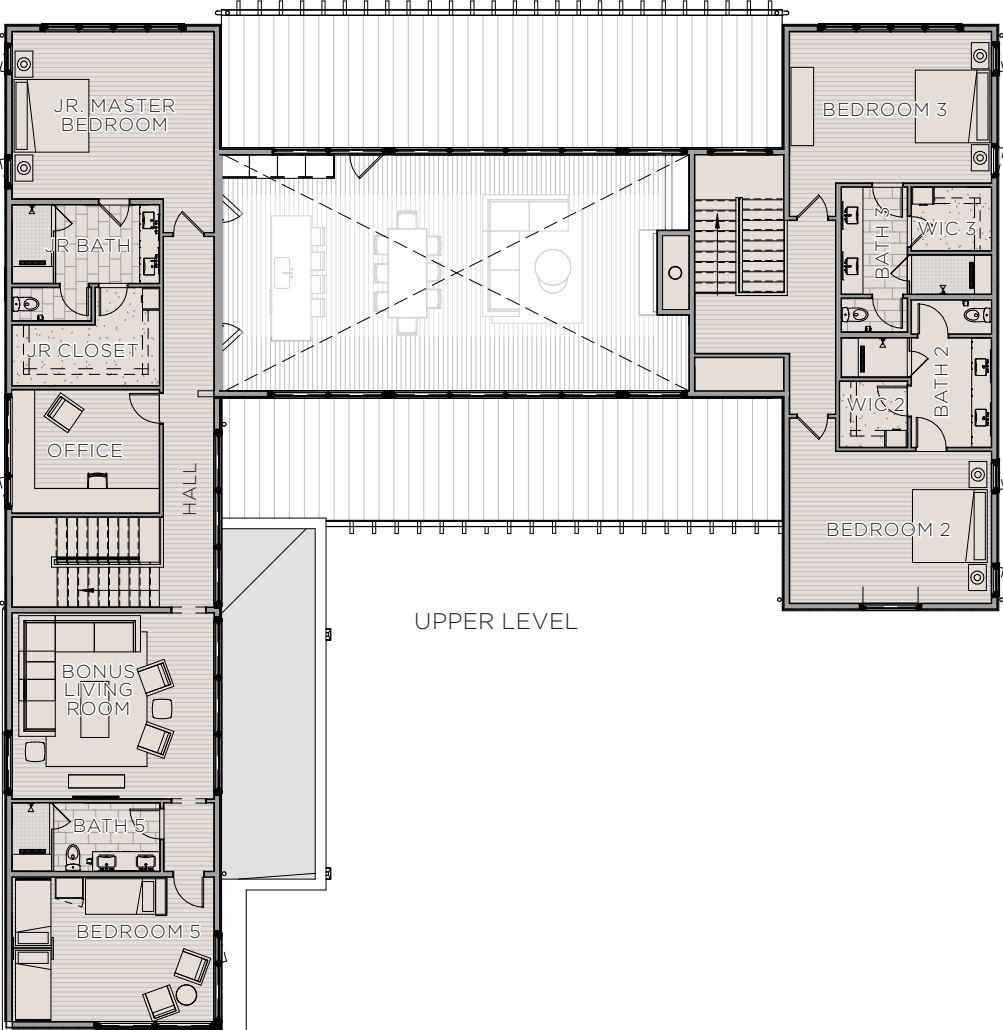
Total SQ Footage:	6,165 SF	Main Level:	3,373 SF
Area Under Roof:	8,273 SF	Upper Level - West:	1,721 SF
Bedrooms:	5	Upper Level - East:	1,072 SF
Bathrooms:	5.5		



MAIN LEVEL

Features + Details

- Large Primary Suite Wing
- Junior Primary Suite
- 3 Car Garage
- Large Front And Rear Covered Porches
- Living Room With Fireplace And Wet Bar
- Great Room With 18ft Ceilings





CONTACT

T +1.615.436.6851

E sales@thetroubadourclub.com

TROUBADOUR GOLF AND FIELD CLUB

8000 Club View Dr

College Grove, TN 37046



These materials and the features and amenities described and depicted herein are based upon current development plans, which are subject to change without notice. Obtain the property report required by applicable government authorities before signing anything. No governmental agency has judged the merits or value, if any, of this property. This material shall not constitute an offer to sell in any state where prior registration is required.

Discovery Tennessee Realty, LLC
T: 1.480.624.5200

