



## TROUBADOUR

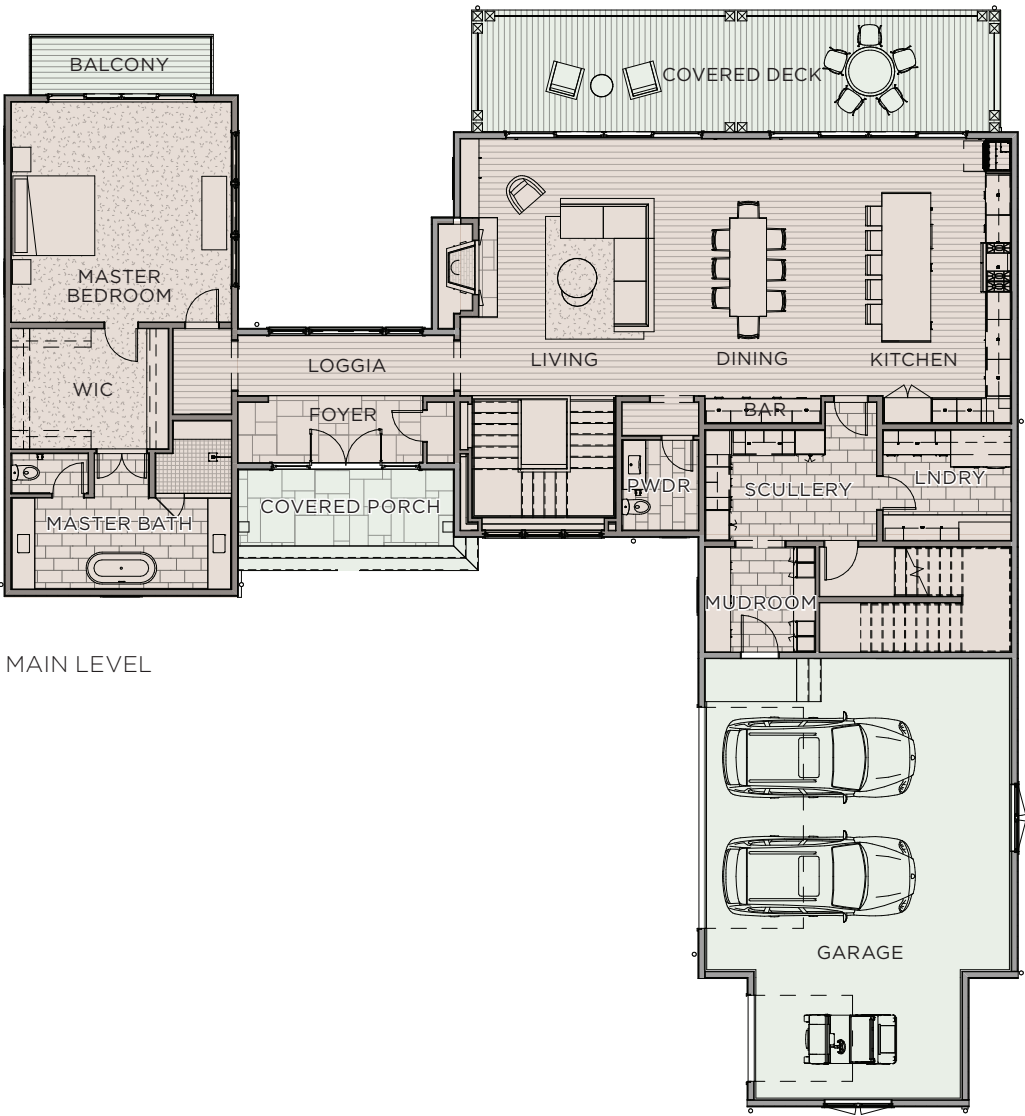
### ELLISTON

The two-level design of the 5,615 square foot Elliston features a large glass entry gallery leading into an open floor plan with living-dining-kitchen great room on the right, and a private primary suite on the left. Tall glass doors graciously open to the outdoor terrace and covered dining patio showcasing expansive views of Troubadour's rolling hills and pristine golf course. The lower level features 10 foot high ceilings with two additional full bedroom suites with dual vanities and walk-in closets, as well as a second living area with fireplace and a broad outdoor patio for lounging and entertaining.

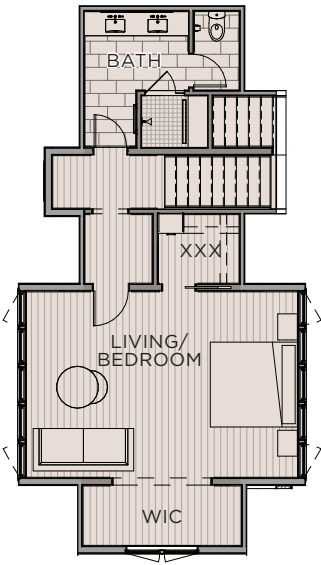


FLOOR PLANS

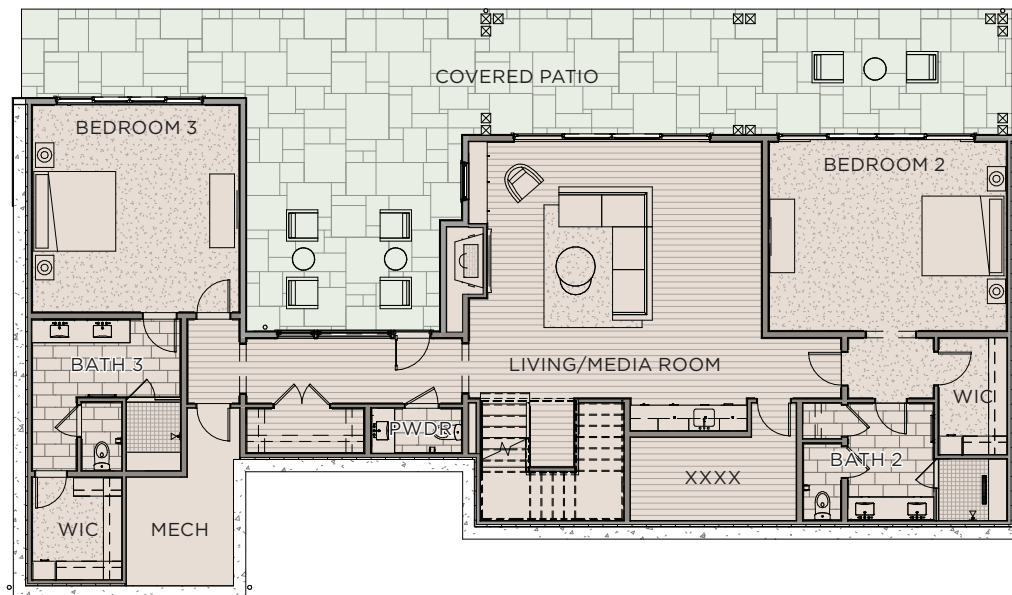
Total SQ Footage:	5,615 SF	Bedrooms:	4
Main Level:	2,597 SF	Bathrooms:	5
Lower Level:	2,367 SF		
Bonus Suite:	650 SF		



MAIN LEVEL



UPPER LEVEL



LOWER LEVEL

### Features + Details

- 5,615 SF (8,129 SF Area Under Roof)
- Kitchen Scullery
- 3 Car Garage
- Large In-Law Suite
- 9ft Tall Glass Doors
- 10ft Tall Ceilings
- 20ft Tall Great Room
- Wood Shake Roofing





## CONTACT

T +1.615.436.6851

E [sales@thetroubadourclub.com](mailto:sales@thetroubadourclub.com)

## TROUBADOUR GOLF AND FIELD CLUB

8000 Club View Dr

College Grove, TN 37046



These materials and the features and amenities described and depicted herein are based upon current development plans, which are subject to change without notice. Obtain the property report required by applicable government authorities before signing anything. No governmental agency has judged the merits or value, if any, of this property. This material shall not constitute an offer to sell in any state where prior registration is required.

Discovery Tennessee Realty, LLC  
T: 1.480.624.5200

